



The Residence 3

MODEL ADDRESS
2500 Wildflower Station Place
Antioch, CA 94531

Dayna Floyd | 925-255-1808
dfloyd@denovahomes.com



1,149 Sq. Ft.

1 Story

3 Bed

2 Bath

The Landing's Residence 3 features 1,149 sq. ft. of living space with 3 bedrooms, 2 baths, 1-car covered parking stall, and 1-car uncovered parking stall. This plan comes fully equipped with a stainless LG appliance package which includes a 30" range, microwave, dishwasher, side-by-side refrigerator, and a stacked white washer and dryer; making moving-in that much easier! The kitchen also includes granite countertops with a 6" backsplash in two color choices, Thermofoil slab cabinets in three color choices with brush nickel bar pulls, and a stainless steel single basin undermount kitchen sink with a Delta Foundations single handle pull out faucet in chrome. This home also comes with luxury vinyl plank flooring at entry, living room, dining room, kitchen and hallways, 13" x 13" ceramic tile at all baths and laundry, Shaw Fast Ball carpet in the bedroom, and much more! Please see Sales Representative for complete details.



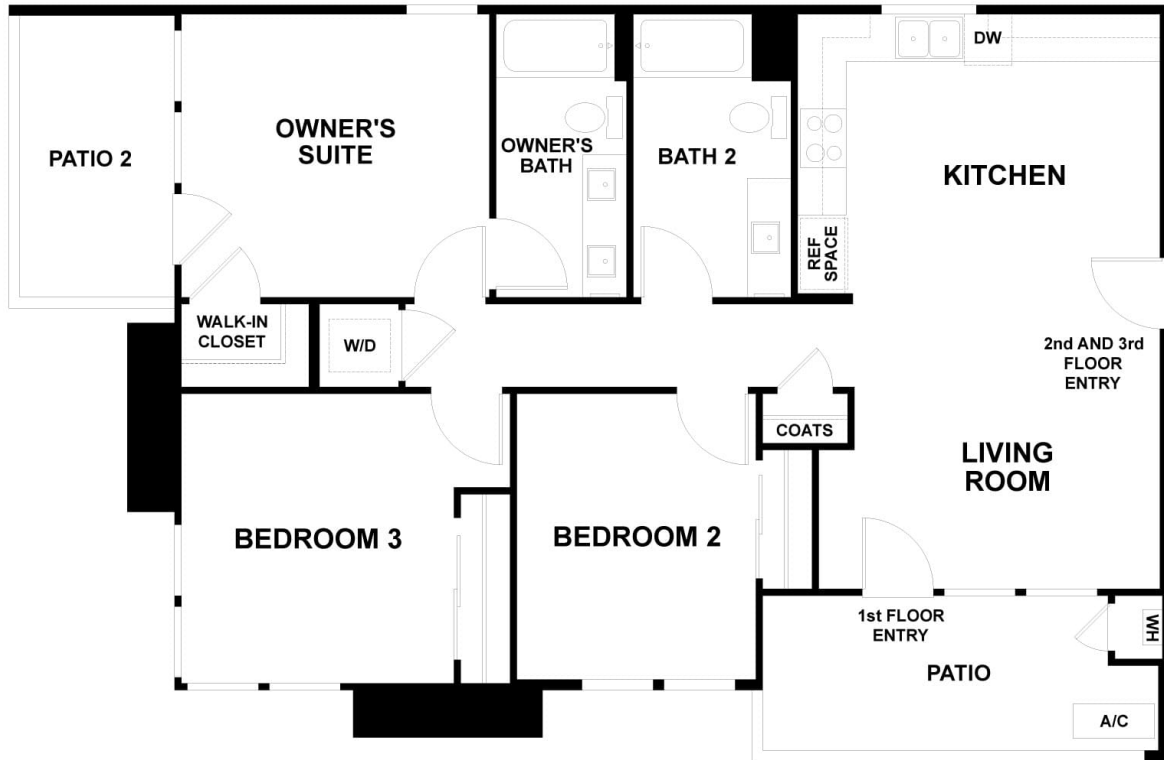
Elevation A



Elevation B

All renderings are artist's conception. Actual porch and window configuration varies from artists renderings. DeNova Homes reserves the right to make changes in price, material, and specifications without notice and without liability for such changes. Broker cooperation welcome. Sales & marketing by DeNova Homes Sales, DRE #01247582 Equal Housing Opportunity.





Floor Plan