

QUICK MOVE-IN

\$626,500

THE RESIDENCE 3

932 Sq. Ft.

3 Story

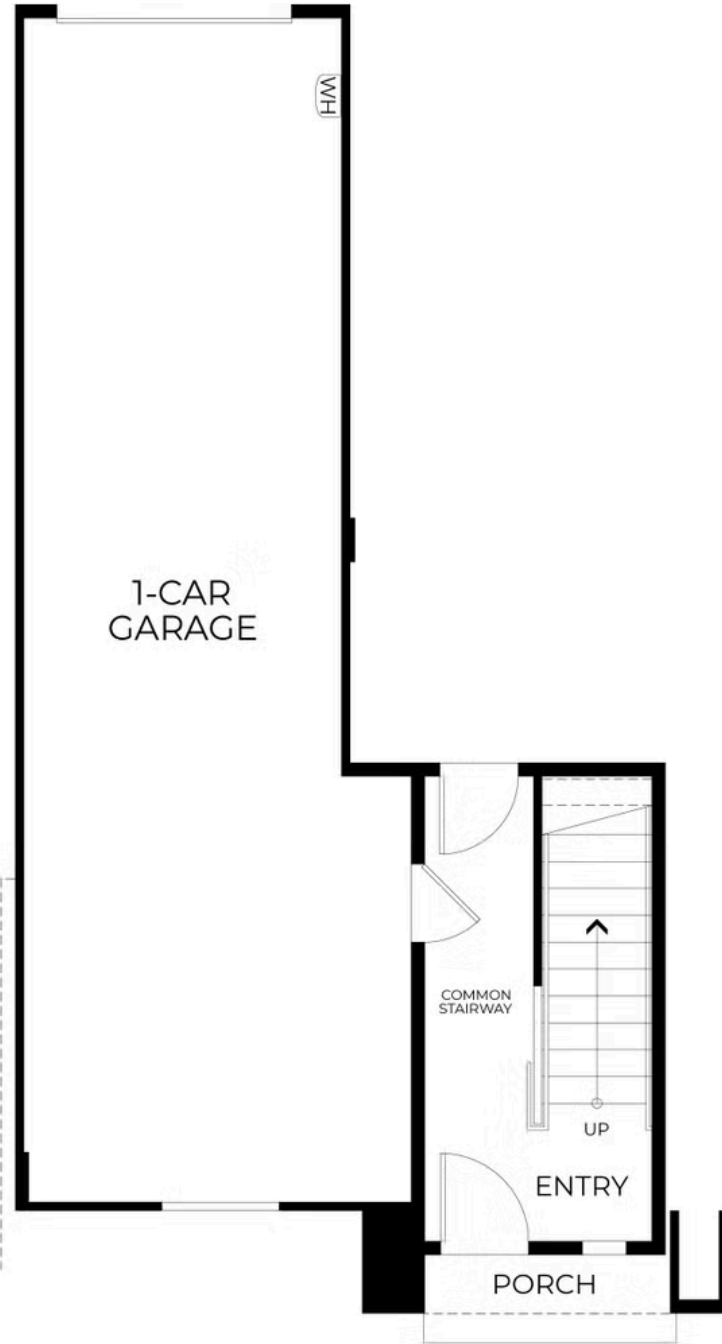
2 Bed

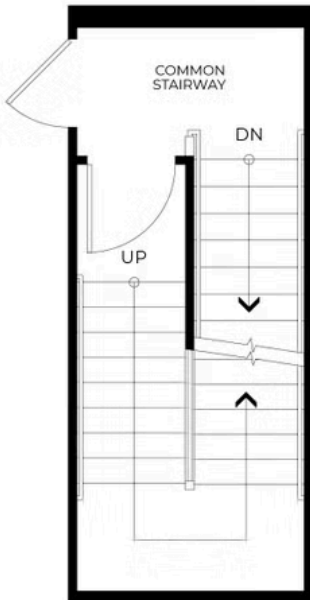
2 Bath

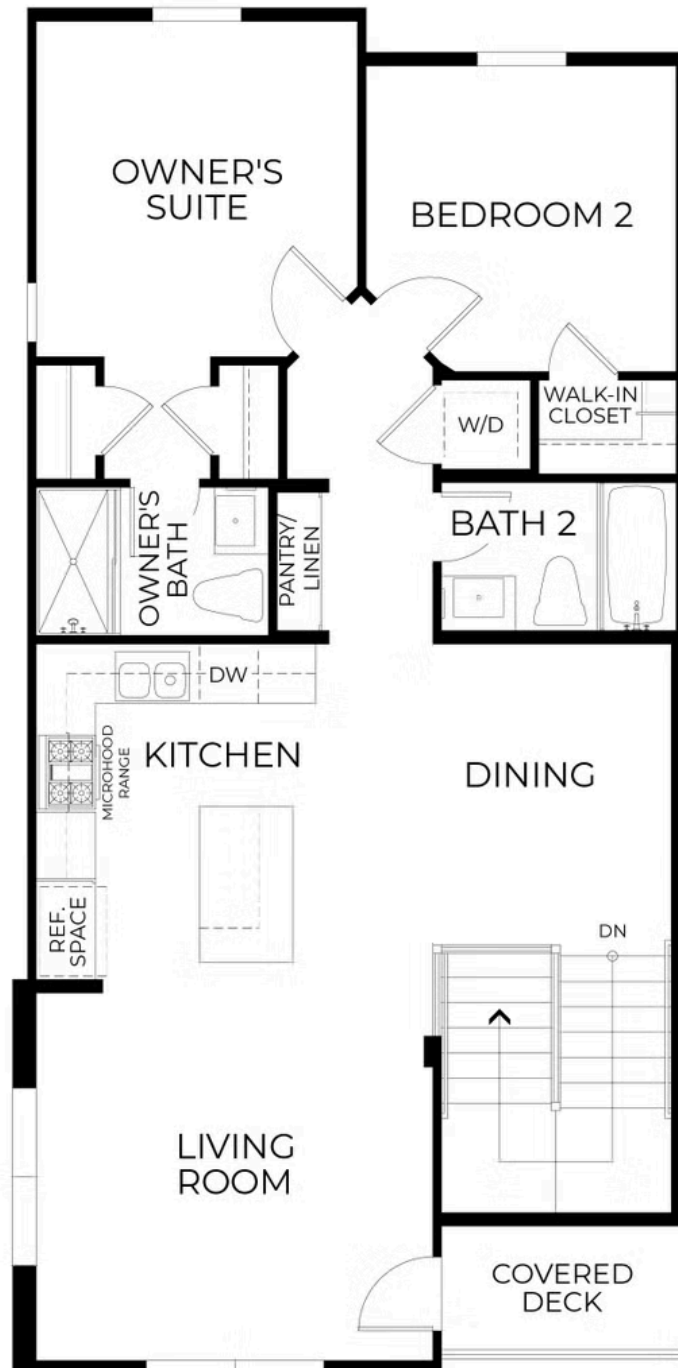
1 Car Garage

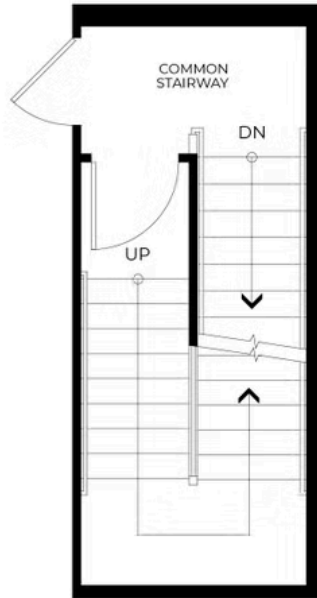


With approximately 932 square feet of thoughtfully planned space, Residence 3 features two bedrooms and two bathrooms on a single level. The open kitchen, dining, and living area is ideal for both everyday living and entertaining and opens to a private covered deck. The owner's suite includes two closets, and an optional built in bench in the dining area adds a custom touch. This home shares a stairway with one other residence and includes a private on car garage. **See Agent for More Details.**

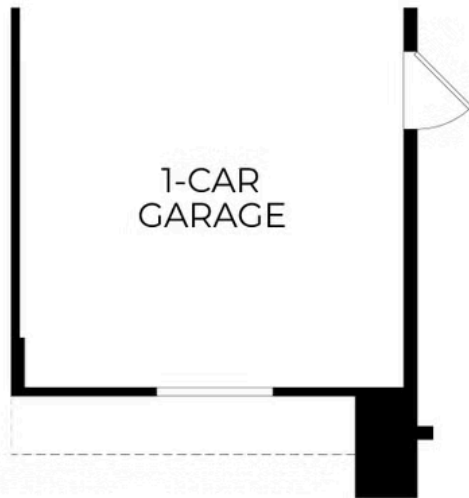








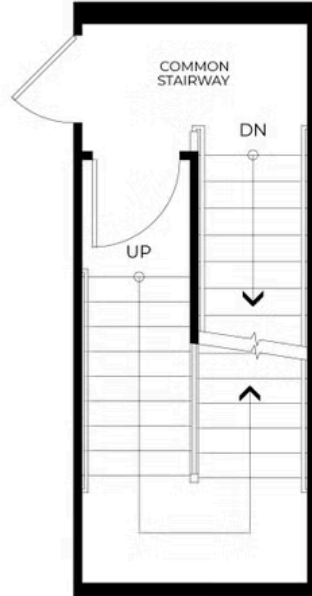
ELEVATION 3
SECOND FLOOR
(SAME AS ELEVATION 3Y)



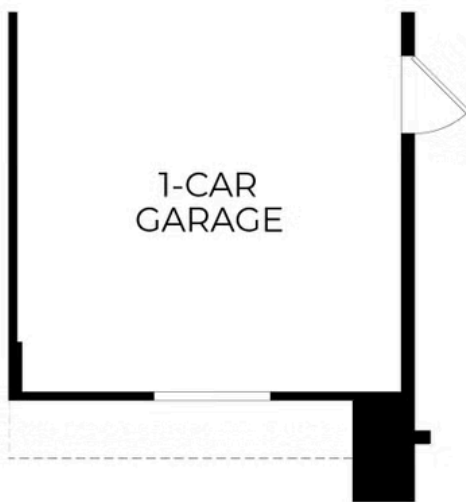
ELEVATION 3
FIRST FLOOR



ELEVATION 3
THIRD FLOOR



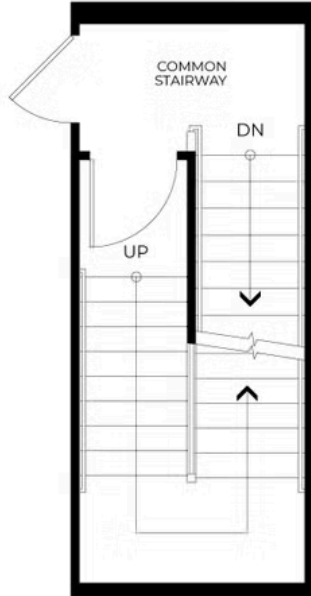
ELEVATION 3X
SECOND FLOOR
(SAME AS ELEVATION 3Y)



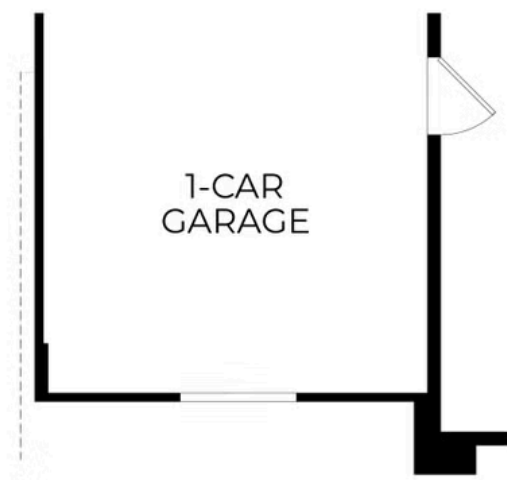
ELEVATION 3X
FIRST FLOOR
(SAME AS ELEVATION 3)



ELEVATION 3X
THIRD FLOOR



ELEVATION 3Z
SECOND FLOOR
(SAME AS ELEVATION 3Y)



ELEVATION 3Z
FIRST FLOOR
(SAME AS ELEVATION 3Y)



ELEVATION 3Z
THIRD FLOOR