



UNDER
CONSTRUCTION

\$599,900

THE RESIDENCE 2

751 Sq. Ft.

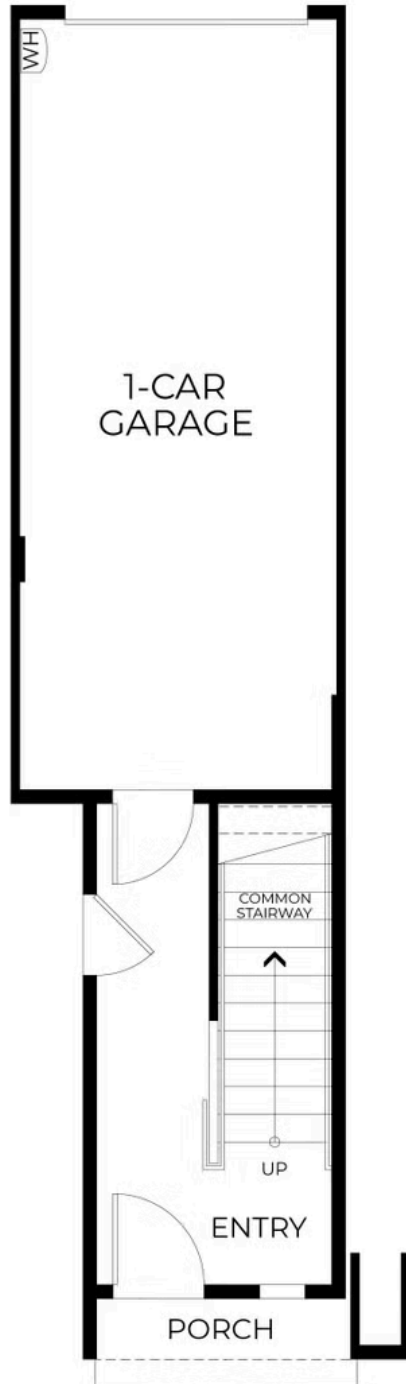
2 Story

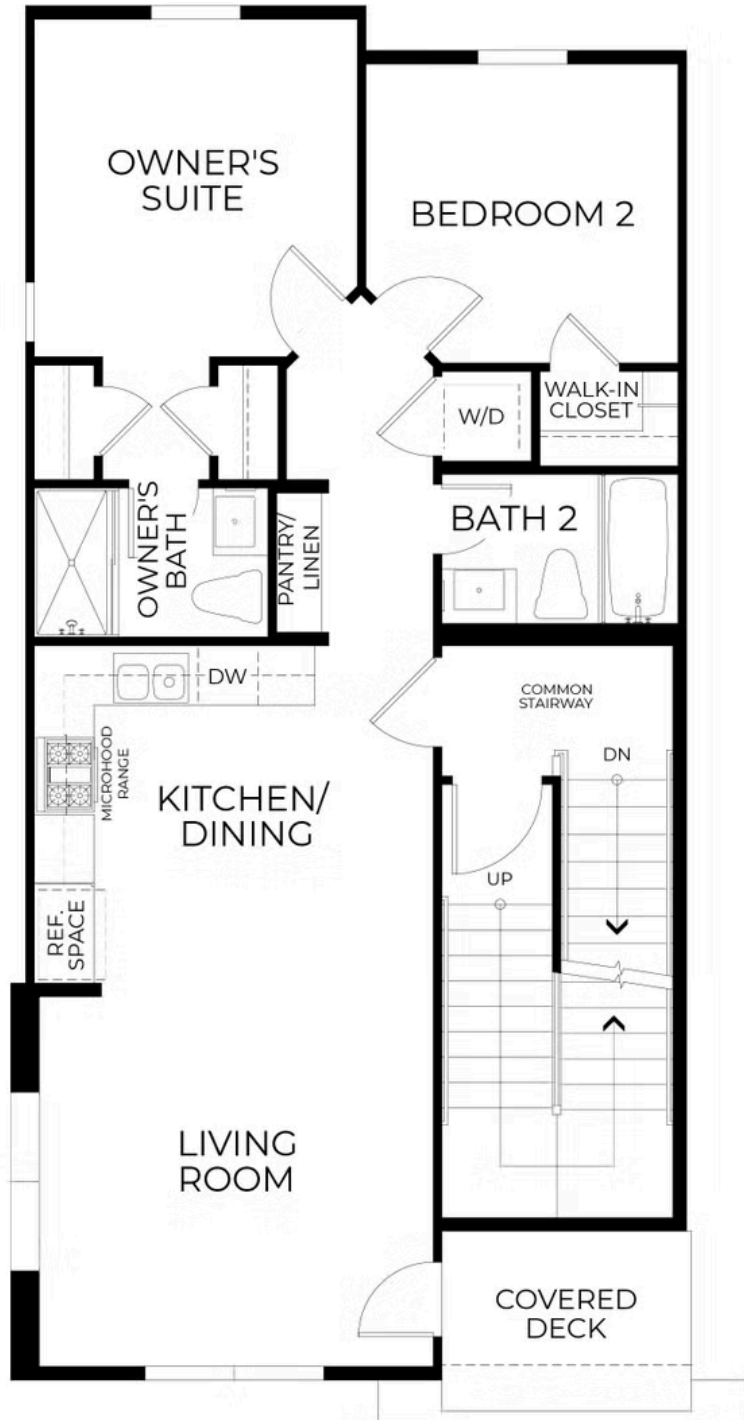
2 Bed

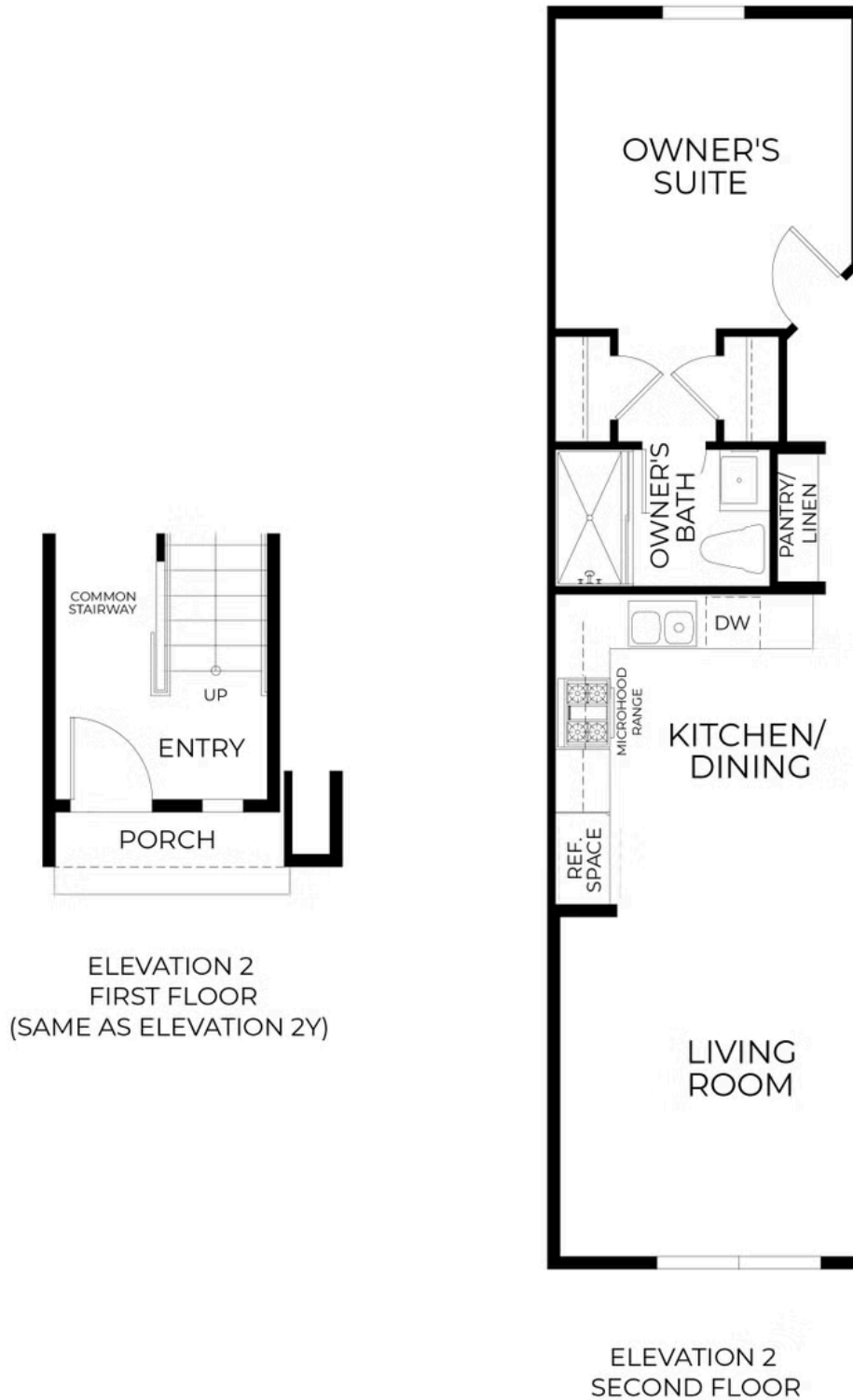
2 Bath

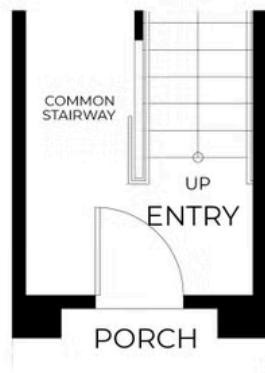
1 Car Garage

Homesite 35 at Silverado Terrace showcases elevated style with two-tone Worldly Grey paint, espresso-stained cabinets, and upgraded counters, carpet, and LVP flooring throughout. Offering approximately 751 square feet, this thoughtfully arranged flat includes two bedrooms and two bathrooms, along with a bright kitchen, dining, and living area that opens to a private covered deck. The owner's suite features two separate closets, adding valuable everyday convenience. While the stairway is shared with the upper unit, you will still enjoy your own private entrance and a one-car garage.

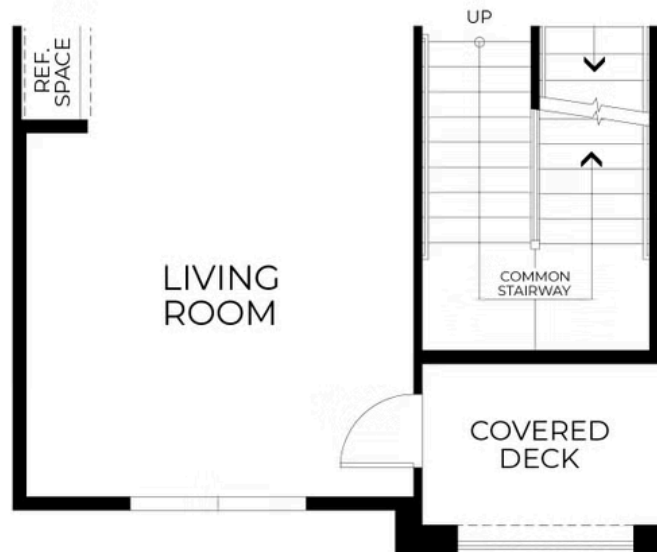




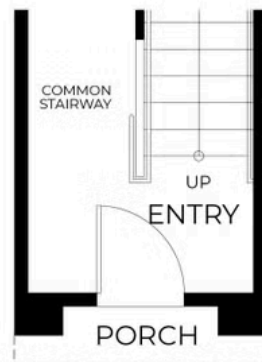




ELEVATION 2X
FIRST FLOOR



ELEVATION 2X
SECOND FLOOR



ELEVATION 2Z
FIRST FLOOR
(SAME AS ELEVATION 2X)



ELEVATION 2Z
SECOND FLOOR