



STARTING AT
\$874,990

1,975 Sq. Ft.

2 Story

3 Bed

2.5 Bath

2 Car Garage

This gorgeous Residence One home features approximately 1,975 square feet, 3 bedrooms, 2.5 baths, a study, optional loft or 4th bedroom, and 2-car garage. The gourmet kitchen with a center island includes elegant quartz slab countertops with stainless steel single-basin kitchen sink, choice of White shaker or Contemporary Wenge cabinets throughout, Bertazzoni stainless steel kitchen appliances including 30" range, microwave hood, and dishwasher, storage pantry, comfortable dining area, and expansive great room. The second floor includes a centrally located laundry room with pre-plumbing for a washer and dryer, spacious secondary bedrooms, and a large master suite with adjoining spa-like master bath with dual sinks, oversized shower with hand-laid subway tile walls, and two walk-in closets! This home also comes with luxury vinyl plank flooring throughout the entry, great room and kitchen. 12" x 12" ceramic tile flooring in all baths and laundry. Carpet in bedrooms and much



Elevation A - Spanish Revival



Elevation B - Plantation



Elevation C - Modern Farmhouse

All renderings are artist's conception. Actual porch and window configuration varies from artists renderings. DeNova Homes reserves the right to make changes in price, material, and specifications without notice and without liability for such changes. Broker cooperation welcome. Sales & marketing by DeNova Homes Sales, DRE #01247582 Equal Housing Opportunity.

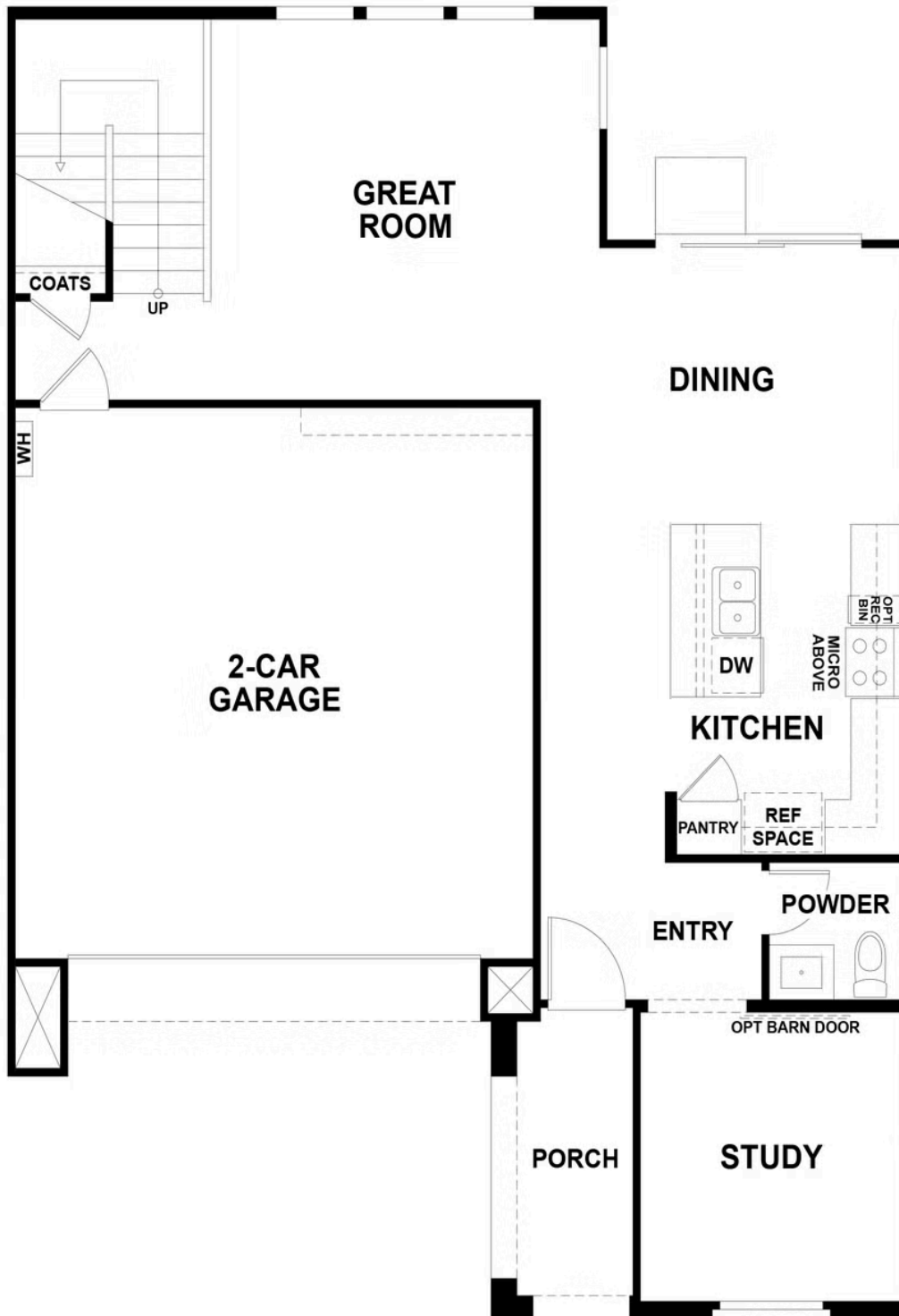
The Residence 1

MODEL ADDRESS

946 Aurora Lane

Costa Mesa, CA 92626

sales@denovahomes.com



The Residence 1

MODEL ADDRESS

946 Aurora Lane

Costa Mesa, CA 92626

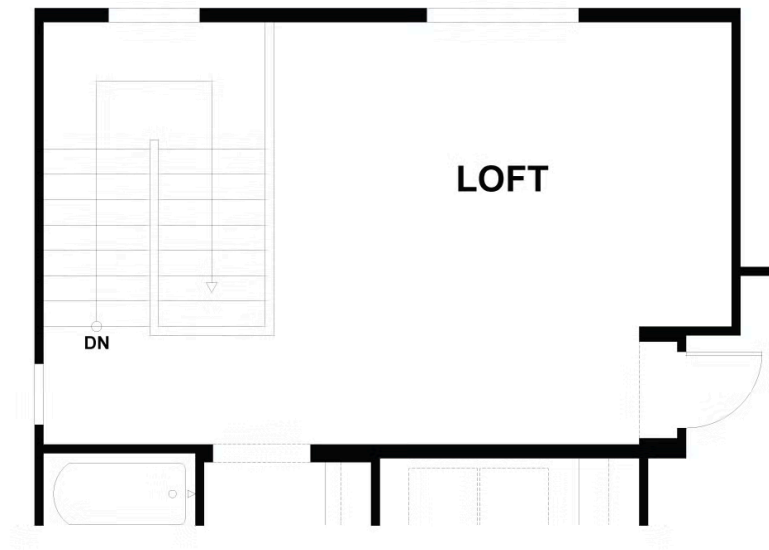
sales@denovahomes.com





OPTIONAL BEDROOM 4 IN LIEU OF LOFT

Optional Bedroom 4 in lieu of Loft



OPTIONAL LOFT

Optional Loft



OPTIONAL TUB AT MASTER BATH

Optional Tub at Master Bath