



The Cottages - Residence 1

MODEL ADDRESS
39660 W Covell Blvd.
Davis, CA 95616

Dayna Floyd | 925-255-1808
dfloyd@denovahomes.com



1,167 Sq. Ft.

2 Bed

2 Bath



**Residence 1A | Modern
Farmhouse**

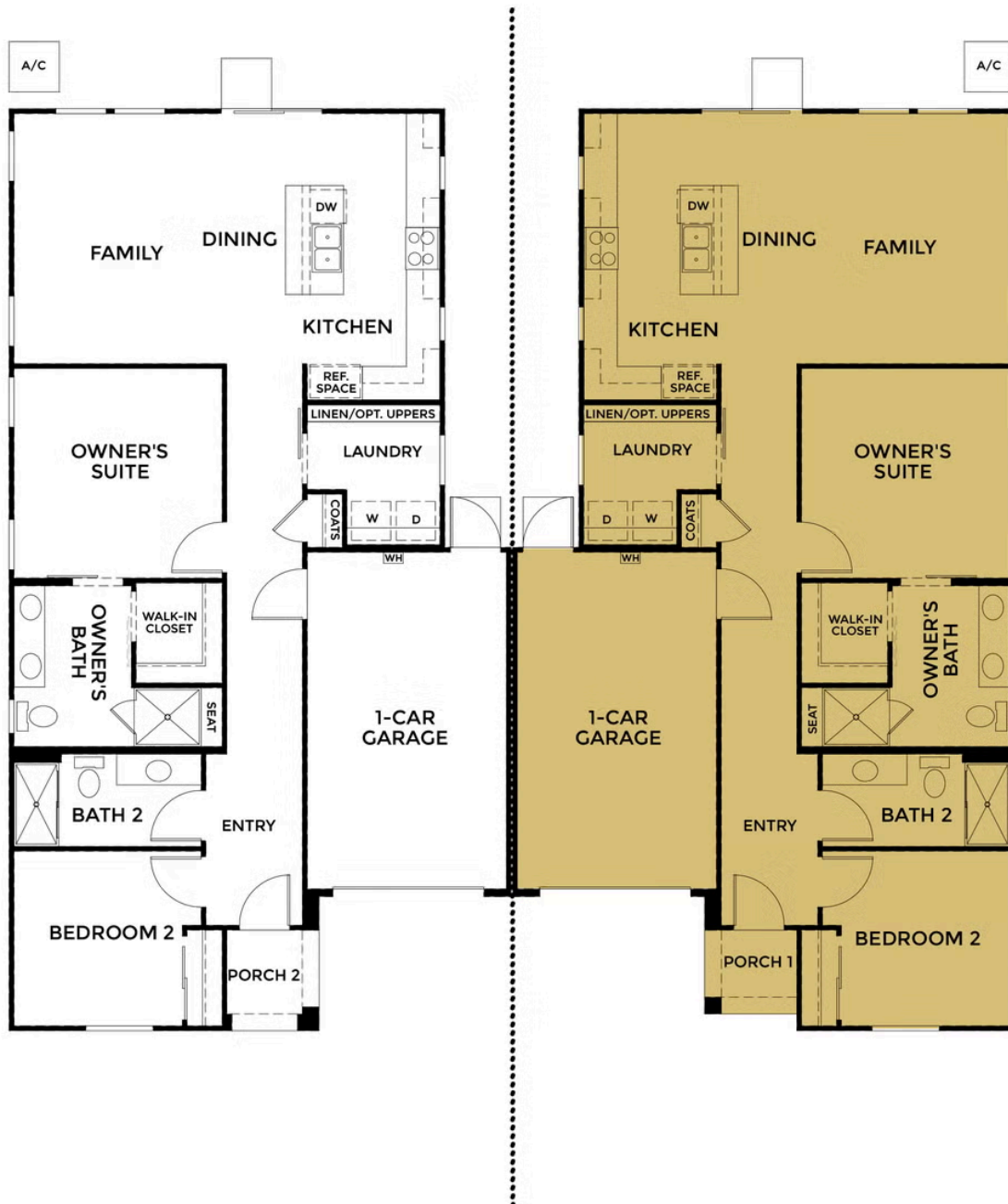


**Residence 1E | Modern
Cottage**

All renderings are artist's conception. Actual porch and window configuration varies from artists renderings. DeNova Homes reserves the right to make changes in price, material, and specifications without notice and without liability for such changes. Broker cooperation welcome. Sales & marketing by DeNova Homes Sales, DRE #01247582 Equal Housing Opportunity.



PRELIMINARY

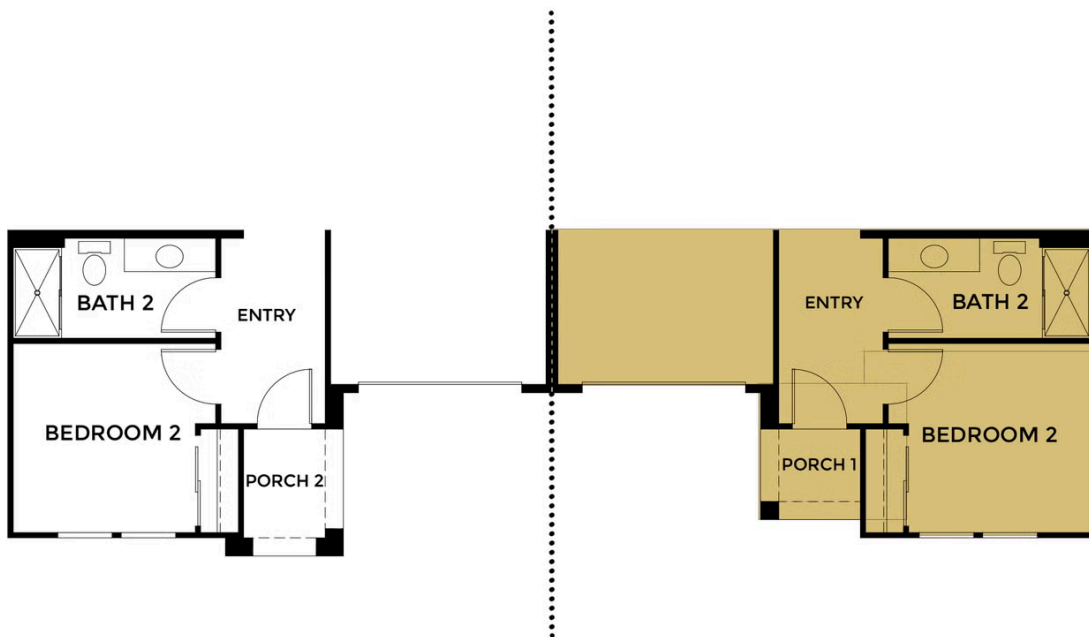


Cottages - Residence 1

All renderings are artist's conception. Actual porch and window configuration varies from artists renderings. DeNova Homes reserves the right to make changes in price, material, and specifications without notice and without liability for such changes. Broker cooperation welcome. Sales & marketing by DeNova Homes Sales, DRE #01247582 Equal Housing Opportunity.



PRELIMINARY



FIRST FLOOR
ELEVATION E

All renderings are artist's conception. Actual porch and window configuration varies from artists renderings. DeNova Homes reserves the right to make changes in price, material, and specifications without notice and without liability for such changes. Broker cooperation welcome. Sales & marketing by DeNova Homes Sales, DRE #01247582 Equal Housing Opportunity.

