



QUICK MOVE-IN

**\$691,500**

## THE RESIDENCE 5

Elevation C

2,731 Sq. Ft.

2 Story

4 Bed

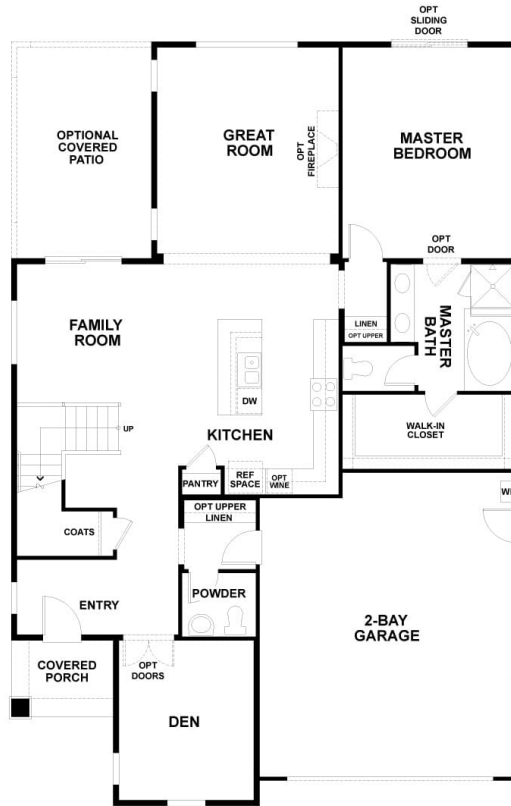
3.5 Bath

2 Car Garage

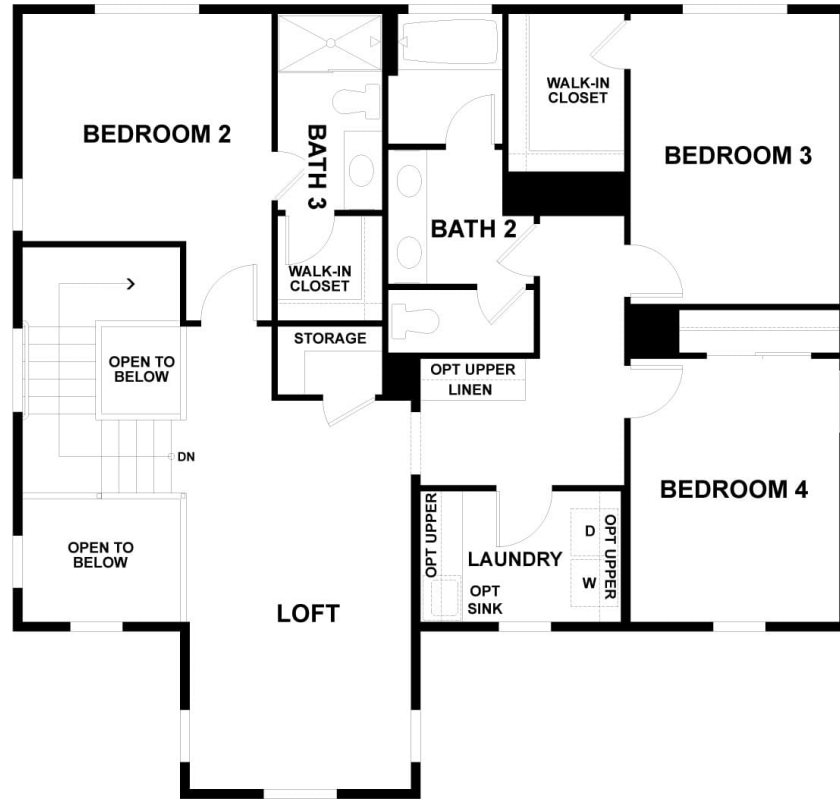
Stunning Residence 5 features 2,731 sq. ft. of living space, 4 bedrooms, 3.5 baths, covered patio, and 2- car garage. The gourmet kitchen island overlooks the family room and includes Birch cabinets in Sarsaparilla-stain with brush nickel pulls, slab granite kitchen countertops with 6" backsplash, GE kitchen appliance package with 30" range, microwave and dishwasher in stainless black. The large master bedroom is on the first floor and has an adjoining spa-like bath with dual sinks, shower, tub, and an expansive walk-in closet.

The second floor includes a centrally located laundry room with pre-plumbing for a washer and dryer and optional laundry sink, large loft, and spacious secondary bedrooms. This home also comes with 18" x 18" ceramic tile flooring at entry, kitchen, and nook, 12" x 12" ceramic tile flooring in all baths and laundry, carpet in bedrooms, tankless water heater, smart thermostat with dual zone air conditioning, and much more! Please see Sales Agent for complete details.

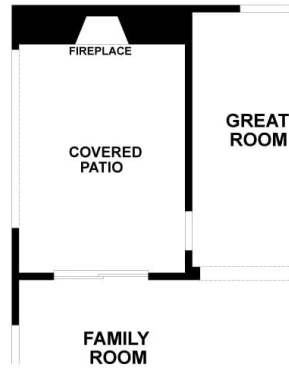
*Please Note: Some photos are from our Residence 5 Model Home.*



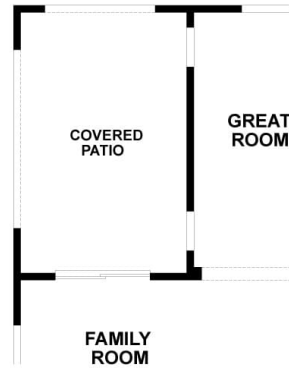
First Level



Second Level



OPTIONAL  
COVERED PATIO  
WITH FIREPLACE



OPTIONAL  
COVERED PATIO

Options