

UNDER
CONSTRUCTION

\$829,900

THE RESIDENCE 2

Row Townhome

1,286 Sq. Ft.

3 Story

2 Bed

2.5 Bath

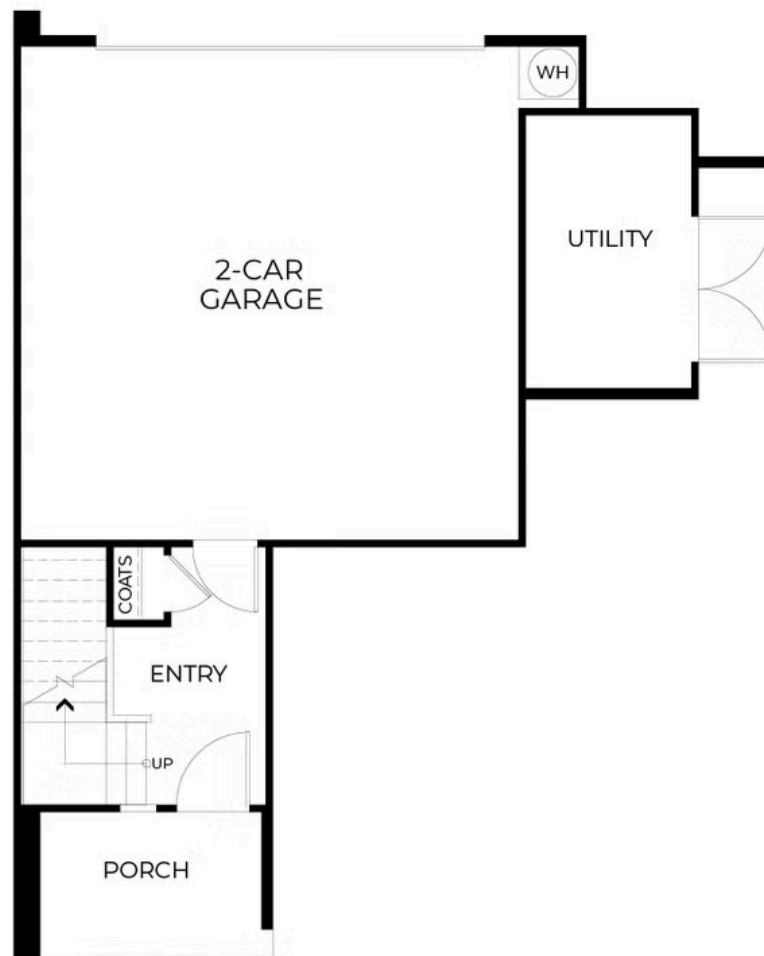
2 Car Garage



Plan 2 offers an inviting two-bedroom layout with approximately 1,286 square feet of well-planned living space. The bright and airy great room flows effortlessly into the open kitchen, complete with a walk-in pantry. A spacious deck enhances the home, creating an outdoor extension perfect for dining or relaxing.

Upstairs, both bedrooms enjoy their own private bathrooms, making this home ideal for shared living or hosting guests. The primary suite features a generous walk-in closet and a beautifully designed bathroom with a seated shower. A two-car garage ensures ample parking and storage, making this home as functional as it is stylish. **Please see agent for more information.**

PRELIMINARY



PRELIMINARY



PRELIMINARY

