



UNDER
CONSTRUCTION

\$641,900

THE RESIDENCE 1

Row Townhome

973 Sq. Ft.

3 Story

1 Bed

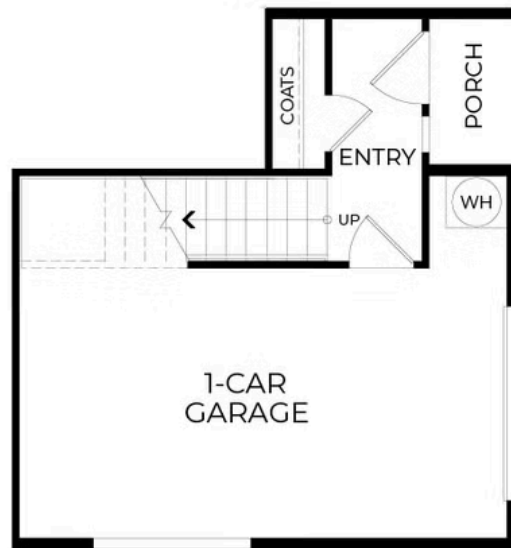
1.5 Bath

1 Car Garage

Plan 1 is a charming one-bedroom townhome that makes the most of its 973 square feet. A private porch entrance transports you upstairs to into an open living space where the kitchen, dining, and great room come together in a seamless design. A large deck extends the living area outdoors, offering a quiet retreat for fresh air and relaxation.

The primary suite is a private sanctuary featuring a grand walk-in closet and a spa-inspired bath with a shower seat for added comfort. A one-car garage provides convenience, while smart design choices maximize space, making this the ideal home for those seeking a stylish yet low-maintenance lifestyle. **Please see agent for more information.**

PRELIMINARY



PRELIMINARY



PRELIMINARY

