

UNDER
CONSTRUCTION

\$989,500

THE RESIDENCE 5

Row Townhome

1,821 Sq. Ft.

3 Story

3 Bed

3 Bath

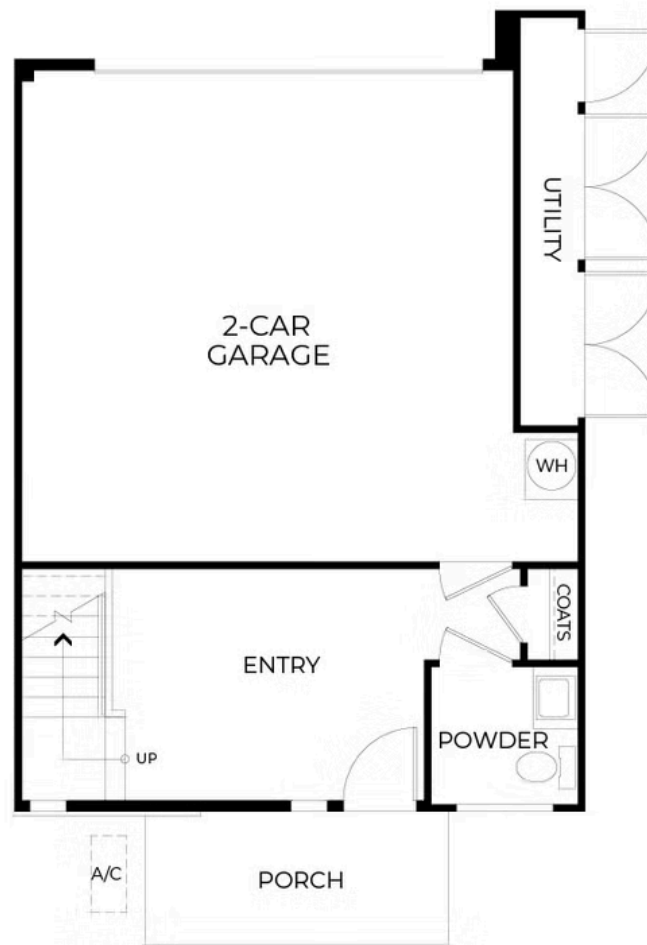
2 Car Garage



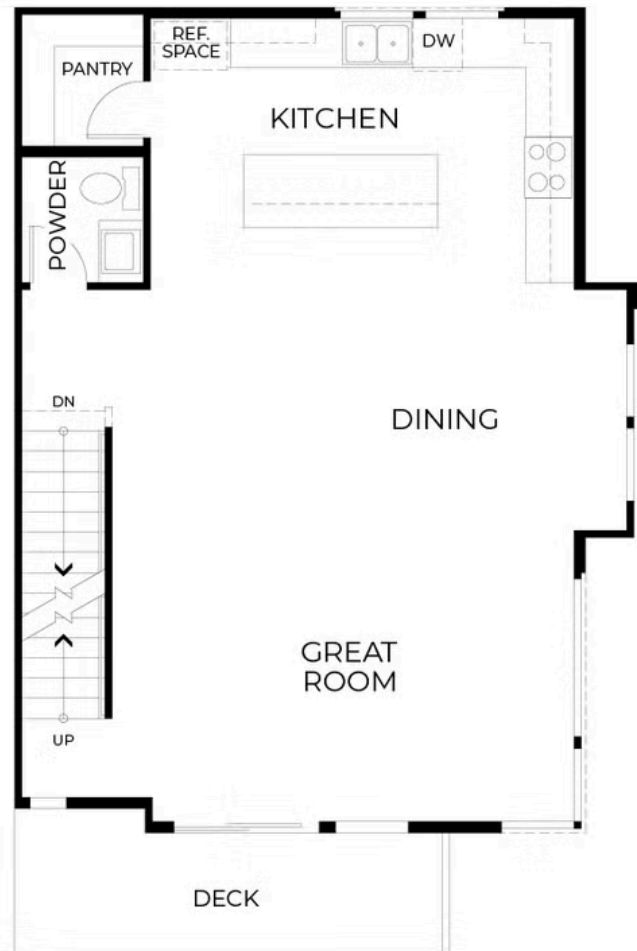
Plan 5 is an expansive three-bedroom home designed for those who need extra space and versatility. At approximately 1,821 square feet, this home features a large entryway with a powder bath and coat closet, perfect for a home office or mudroom. The open kitchen is equipped with a corner walk-in pantry and flows seamlessly into the dining and great room, while a large deck provides an inviting outdoor extension of the living space.

The private primary suite presents a spa-inspired bath with a seated shower and an oversized walk-in closet. Two additional bedrooms share a full bath, and two powder baths ensure guest convenience. A two-car garage rounds out this distinctive design, making it an excellent choice for those seeking space and functionality. **Please see agent for more information.**

PRELIMINARY



PRELIMINARY



PRELIMINARY

