

UNDER
CONSTRUCTION

\$890,500

THE RESIDENCE 3

Row Townhome

1,391 Sq. Ft.

3 Story

2 Bed

2.5 Bath

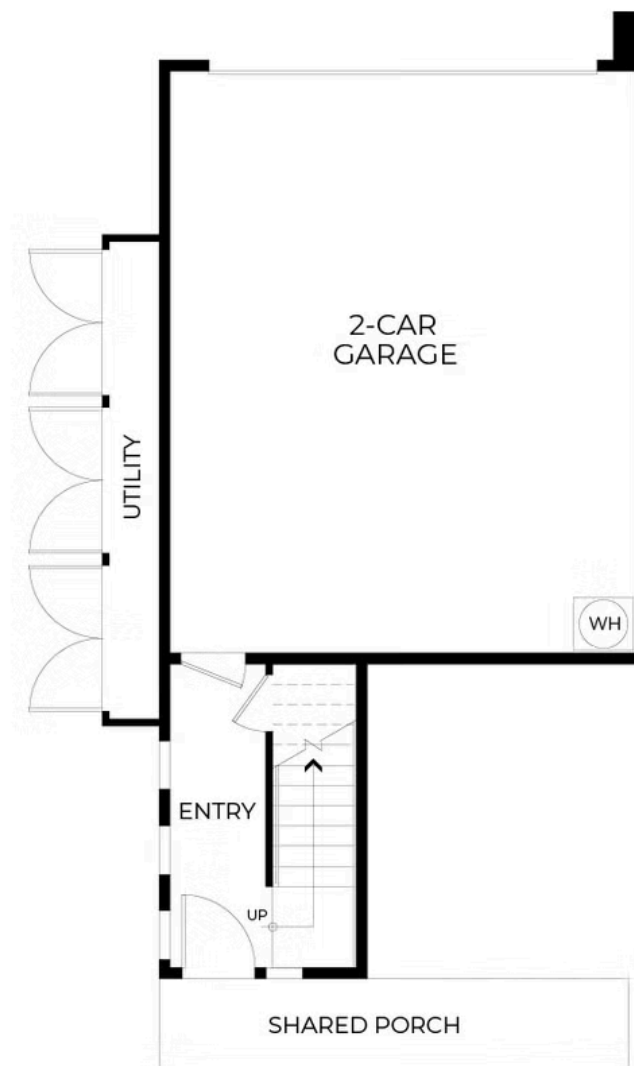
2 Car Garage



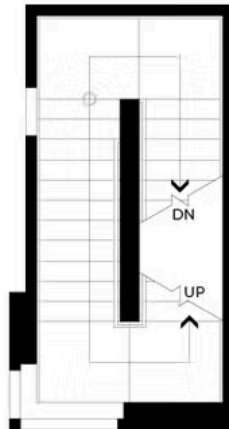
Designed for modern living, Plan 3 offers approximately 1,391 square feet of modern living space. A private porch entry welcomes you inside, where the first floor features a dedicated work center or an optional powder bath, making it a perfect setup for remote work or additional storage. The open-concept main level includes a spacious great room, dining area, and kitchen with a walk-in corner pantry, providing practicality and style. A large deck provides an outdoor retreat, perfect for enjoying morning coffee or evening relaxation.

Upstairs, both bedrooms include en-suite baths for privacy and comfort, while the primary suite boasts a spacious walk-in closet and a seated shower. A two-car garage completes the home, offering storage and convenience in a well-designed layout. **Please see agent for more information.**

PRELIMINARY



PRELIMINARY



PRELIMINARY

