

UNDER
CONSTRUCTION

\$802,500

THE RESIDENCE 3

Stacked Flat

1,445 Sq. Ft.

3 Story

3 Bed

2.5 Bath

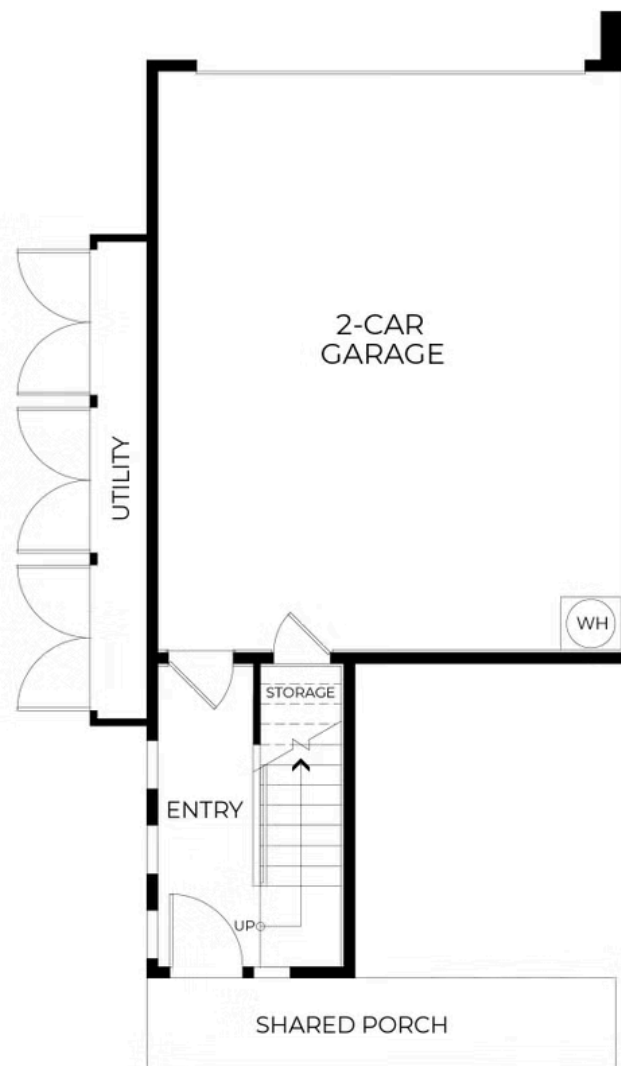
2 Car Garage



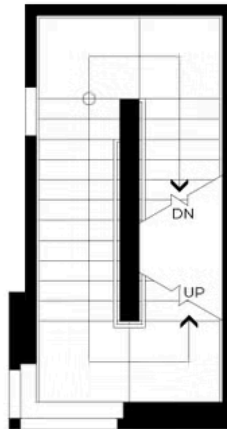
Plan 3 is a spacious three-bedroom flat featuring approximately 1,445 square feet of intentionally designed living space. A shared porch with a private entry ensures a welcoming and private atmosphere. Inside, the open kitchen connects seamlessly to the great room and dining area, creating an ideal space for gatherings and daily living. A large deck offers a peaceful outdoor retreat.

An optional desk area adds flexibility for work or study, while a generous pantry provides additional kitchen storage. The primary suite boasts a spacious walk-in closet and a seated shower, while two additional bedrooms share a well-appointed bath. With a two-car garage and a smart layout, Plan 3 delivers ease and comfort in a modern home design. **Please see agent for more information.**

PRELIMINARY



PRELIMINARY



PRELIMINARY

