



UNDER
CONSTRUCTION

\$1,124,900

THE RESIDENCE 1

Craftsman

2,182 Sq. Ft.

2 Story

4 Bed

3 Bath

2 Car Garage

This Residence 1 floor plan blends style and function in a two-story layout offering approx. 2,182 sq. ft. of modern living space. The first-floor kitchen features ebony ceiling-height cabinets, upgraded appliances, soft-close doors and drawers, and a center island with a built-in roll-out trash/recycling bin. A walk-in pantry keeps appliances out of sight and essentials within reach. A full bathroom and bedroom are also on the main level.

Upstairs, two bedrooms and a full bath are located down the hall from the primary suite with en-suite bath. Nearby, the laundry room includes upgraded cabinets and a sink for added convenience. A private alcove ideal for a desk and a spacious loft complete the second floor. This hillside homesite offers an oversized lot, perfect for a future tiered terrace or garden. Don't miss your chance to own this exceptional new home in a desirable location! See agent for more information.



FIRST FLOOR

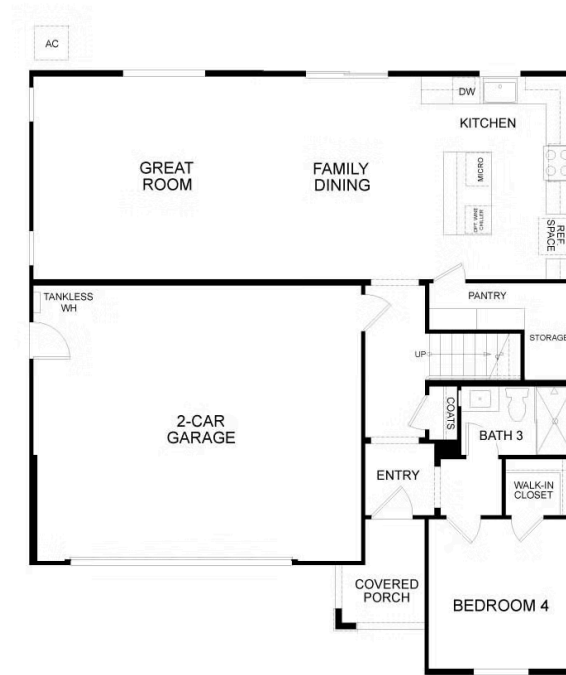


SECOND FLOOR



PRELIMINARY

Residence 1



PRELIMINARY

FIRST FLOOR

Residence 1 First Floor



SECOND FLOOR

PRELIMINARY

Residence 1 Second Floor



51 DeNova Lane

Martinez, CA 94553

180 Midhill

Dayna Floyd | 9252551808

dfloyd@denovahomes.com



PRELIMINARY

Residence 1

