



STARTING AT
\$1,114,900

2,426 Sq. Ft.

2 Story

4 Bed

3 Bath

2 Car Garage

Residence 2 combines style and functionality in a spacious two-story design offering approximately 2,426 square feet of modern living with 4 bedrooms, a loft (or 5th bedroom), 3 baths, and a 2-Car Garage. With three distinct elevations to choose from, this home allows you to reflect your personal style while enjoying the comfort of thoughtfully designed spaces. A welcoming front porch sets the stage for the warm atmosphere inside, where the open-concept layout connects the kitchen, dining area, and great room—ideal for everything from quiet evenings to celebrations with family. The kitchen is a centerpiece of this plan, featuring a walk-in pantry that provides ample storage for all your culinary essentials.

The second floor offers a balance of flexibility and privacy, starting with a bright and open loft that can be tailored to your



Residence 2A | Tuscan



Residence 2B | Craftsman



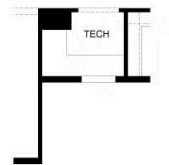
Residence 2C | Modern Farmhouse



FIRST FLOOR



SECOND FLOOR



OPTIONAL TECH
ILO STORAGE



OPTIONAL
BEDROOM 5 ILO
LOFT

PRELIMINARY

Residence 2 Floor Plan



PRELIMINARY

FIRST FLOOR

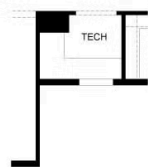
Residence 2 First Floor



SECOND FLOOR

PRELIMINARY

Residence 2 Second Floor



OPTIONAL TECH
ILO STORAGE



OPTIONAL
BEDROOM 5 ILO
LOFT

PRELIMINARY

Residence 2 Options