

UNDER
CONSTRUCTION

\$1,089,500

THE RESIDENCE 2

Modern Farmhouse

2,182 Sq. Ft.

2 Story

4 Bed

3 Bath

2 Car Garage



Residence 2 is a versatile two-story home designed for modern living, offering approximately 2,182 square feet of carefully planned space with 4 bedrooms, a loft (or 5th bedroom), 3 baths, and a 2-car garage. From the moment you step onto the charming covered porch, you will feel at home. The thoughtfully designed first floor features an open flow between the great room, dining area, and kitchen, creating an inviting atmosphere for everything from casual family meals to large gatherings. A convenient downstairs guest bedroom with a walk-in closet adds flexibility, whether hosting extended family or creating a private office space.

Upstairs, a spacious loft offers a comfortable spot for relaxation, entertainment, or a home office. The grand owner's suite is a true highlight, offering a luxurious private retreat with an oversized walk-in closet and an elegant en-suite bathroom. Two additional bedrooms and a full bathroom complete the second floor.

Residence 2 features a perfect balance of comfort, style, and practicality, making it an excellent choice for families or those who enjoy flexible living spaces.

See agent for complete details.



FIRST FLOOR

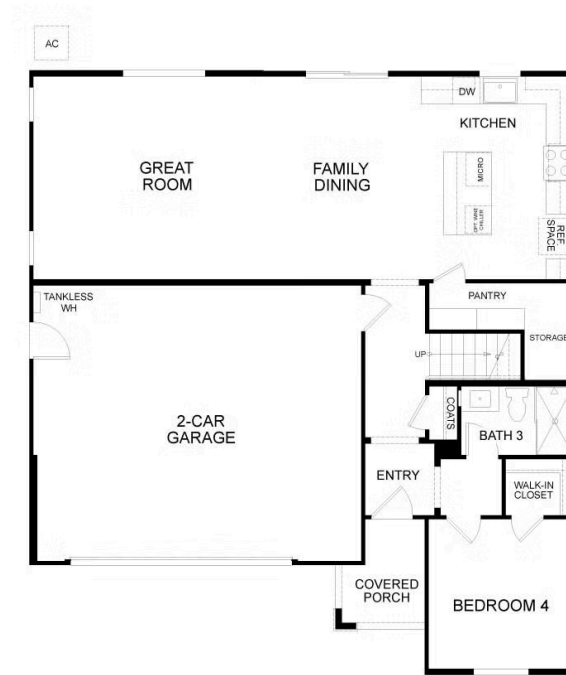


SECOND FLOOR



PRELIMINARY

Residence 2 Floor Plan



PRELIMINARY

FIRST FLOOR

Residence 2 First Floor



SECOND FLOOR

PRELIMINARY

Residence 2 Second Floor



PRELIMINARY

Residence 2 Option Bed 5 in Lieu of Loft