



STARTING AT
\$658,500

1,932 Sq. Ft.

2 Story

4 Bed

3 Bath

2 Car Garage

Cattle Ridge Residence 1 redefines modern living with 1,932 square feet of stylish, functional space. This 4-bedroom, 3-bathroom home welcomes you with a spacious layout that connects the kitchen, dining, and living areas, creating the perfect backdrop for both intimate gatherings and lively celebrations. A versatile main floor bedroom and full bathroom add a touch of convenience ideal for guests or a home office.

Upstairs, the primary suite awaits, offering a tranquil retreat with a spacious walk-in closet and a luxurious ensuite bath. Two additional bedrooms share a thoughtfully designed bathroom, completing the upper level. For those who cherish outdoor living, an optional covered patio transforms the backyard into an alfresco paradise, perfect for morning coffees or sunset



Residence 1A | Spanish



Residence 1B | Tuscan



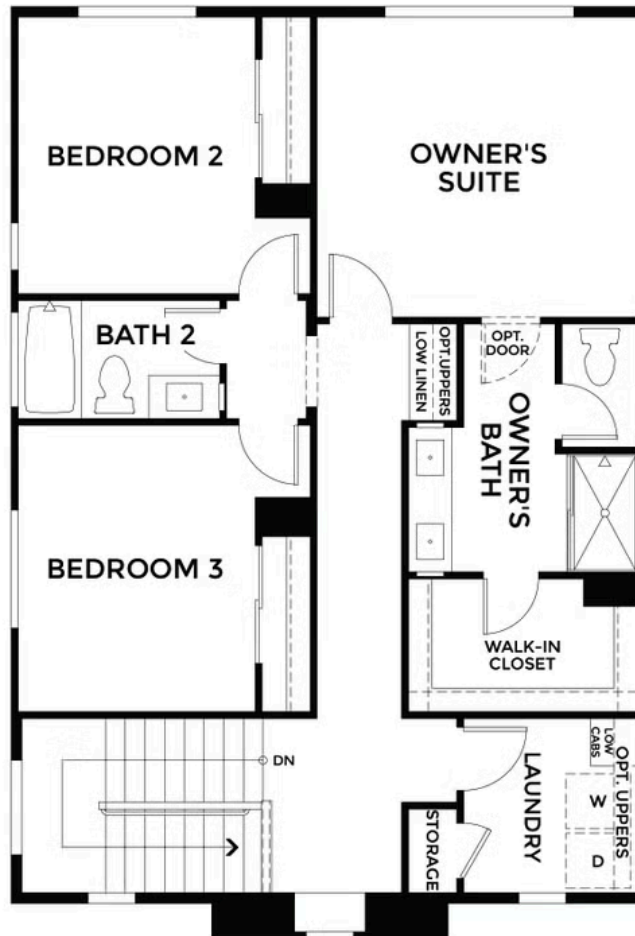
Residence 1E | Farmhouse

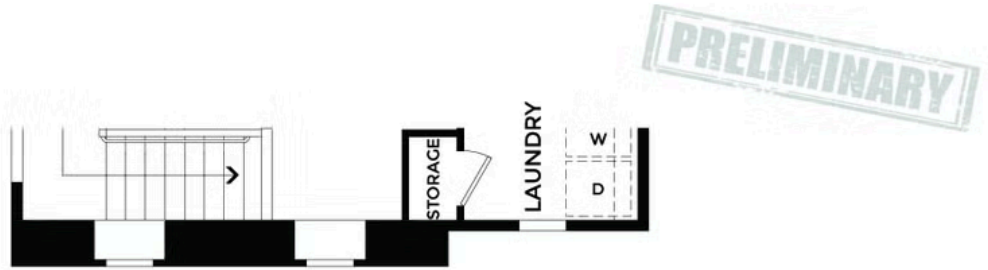
All renderings are artist's conception. Actual porch and window configuration varies from artists renderings. DeNova Homes reserves the right to make changes in price, material, and specifications without notice and without liability for such changes. Broker cooperation welcome. Sales & marketing by DeNova Homes Sales, DRE #01247582 Equal Housing Opportunity.



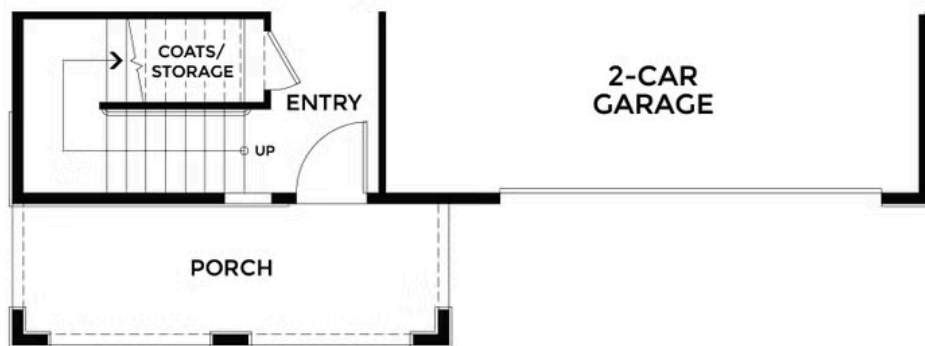


PRELIMINARY



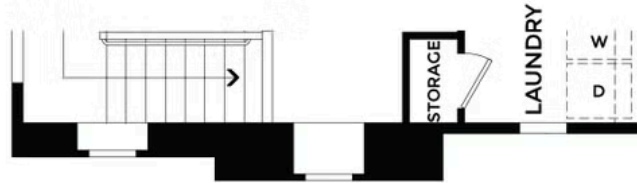


**ELEVATION TUSCAN
SECOND FLOOR**

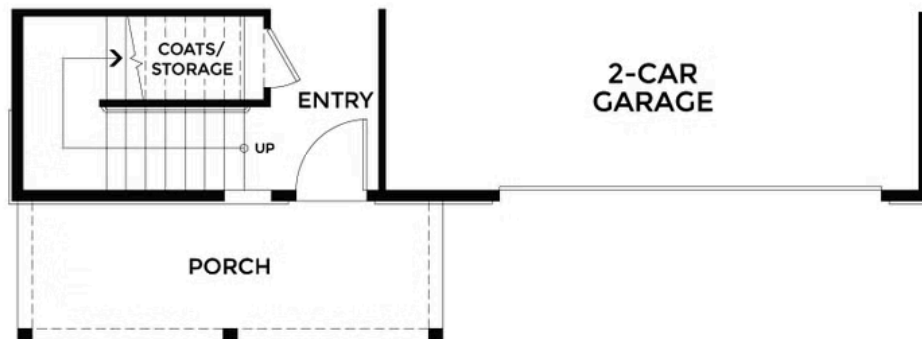


**ELEVATION TUSCAN
FIRST FLOOR**

PRELIMINARY



**ELEVATION FARMHOUSE
SECOND FLOOR**



**ELEVATION FARMHOUSE
FIRST FLOOR**

PRELIMINARY

