



QUICK MOVE-IN

\$799,500

THE RESIDENCE 12

Prairie

3,127 Sq. Ft.

2 Story

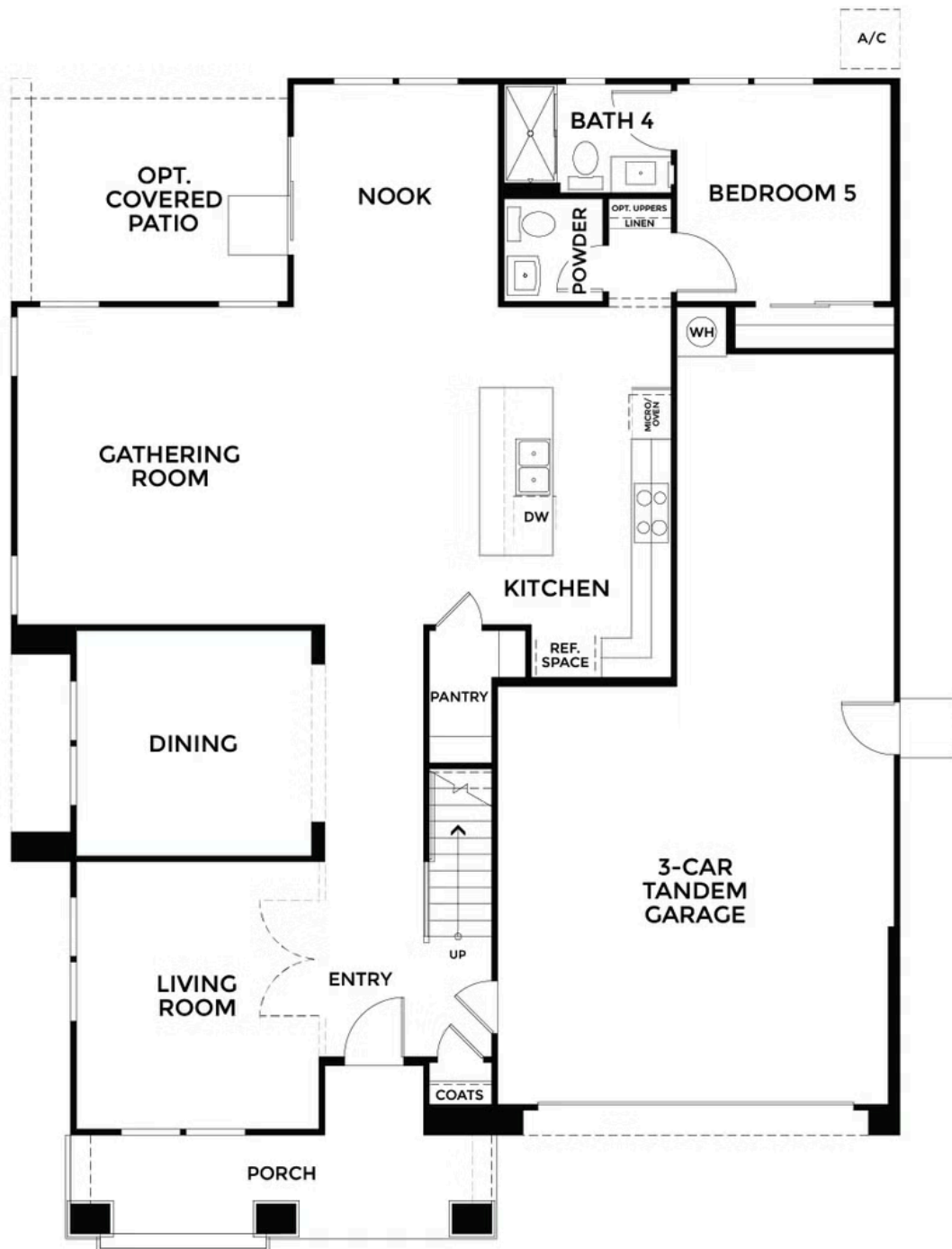
5 Bed

4.5 Bath

3 Car Garage

Designed for flexibility, Residence 12 features 5 bedrooms, 4.5 bathrooms, and approx. 3,120 square feet of thoughtful two-story living. The first floor includes a front living room that can double as an office, a formal dining room, a spacious kitchen with dining nook, deep pantry, and direct access to a private downstairs bedroom with ensuite bath, perfect for guest or multigenerational living.

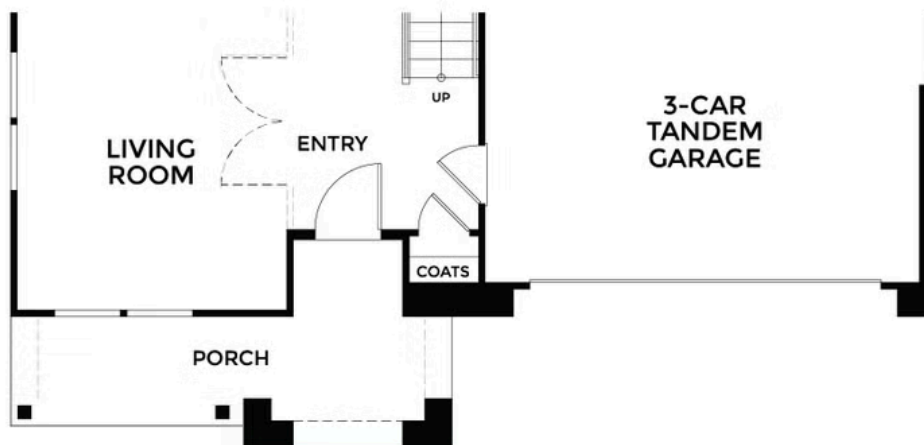
Upstairs, the generous loft offers additional hangout or workspace, while the large laundry room makes daily routines easier. The owner's suite includes a spa-like bath and an oversized walk-in closet. With a three-car tandem garage, optional covered patio, and three elevations to choose from, Residence 12 is built for how you live now and how you want to live next.



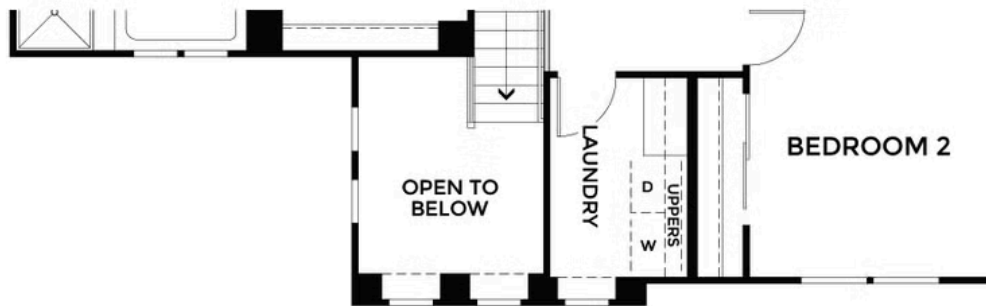




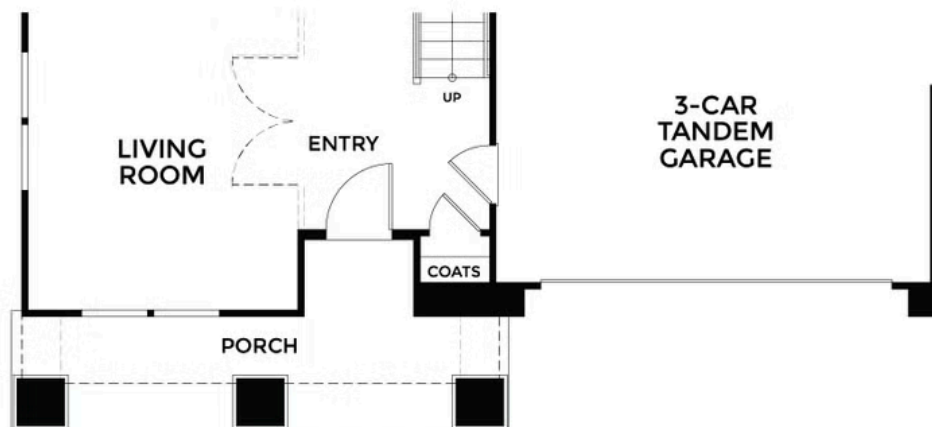
**ELEVATION SPANISH
SECOND FLOOR**



**ELEVATION SPANISH
FIRST FLOOR**



**ELEVATION TRADITIONAL
SECOND FLOOR**



**ELEVATION TRADITIONAL
FIRST FLOOR**

