

UNDER  
CONSTRUCTION

**\$850,900**

**THE RESIDENCE 13**

Spanish

3,425 Sq. Ft.

2 Story

5 Bed

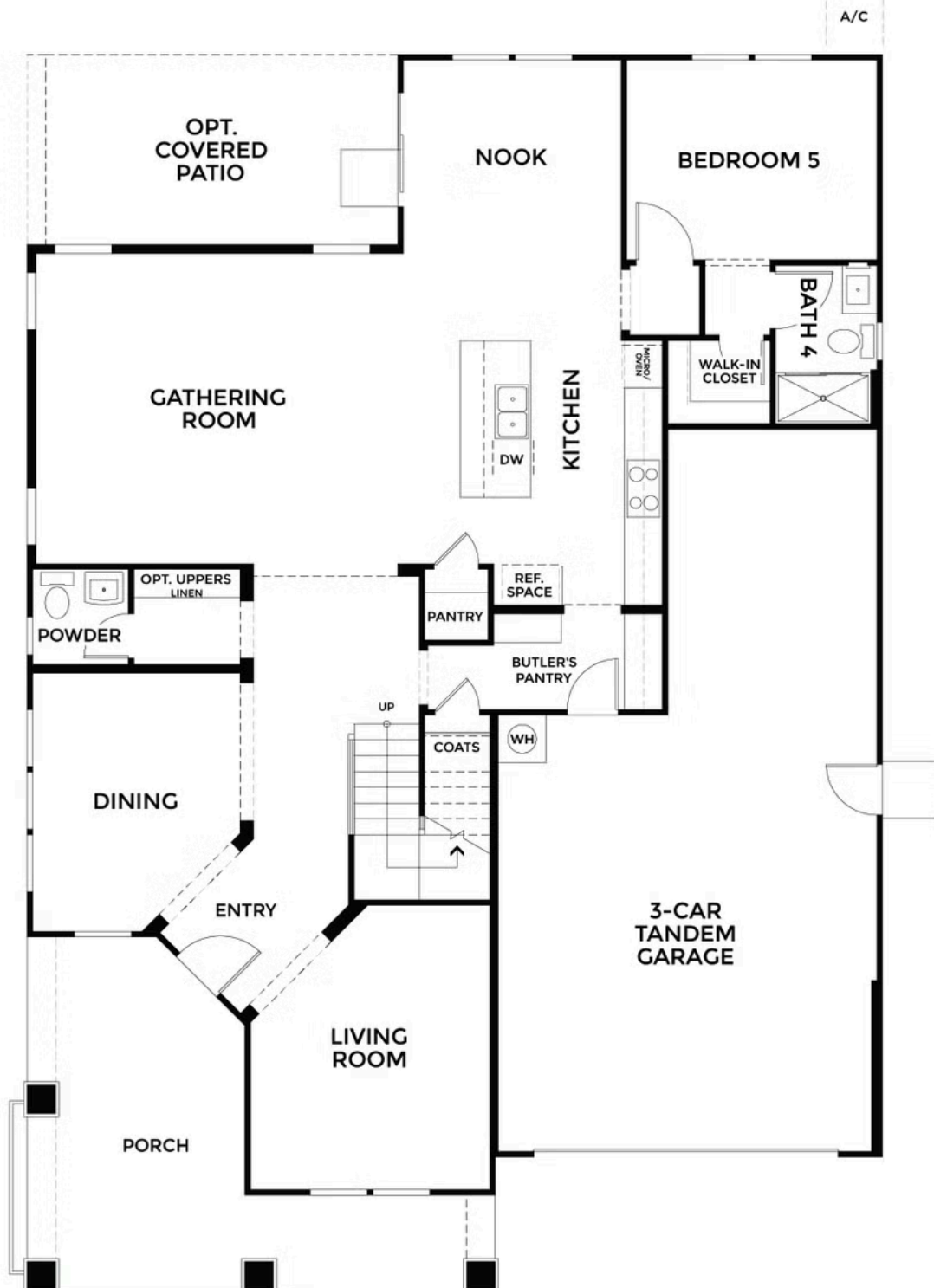
4.5 Bath

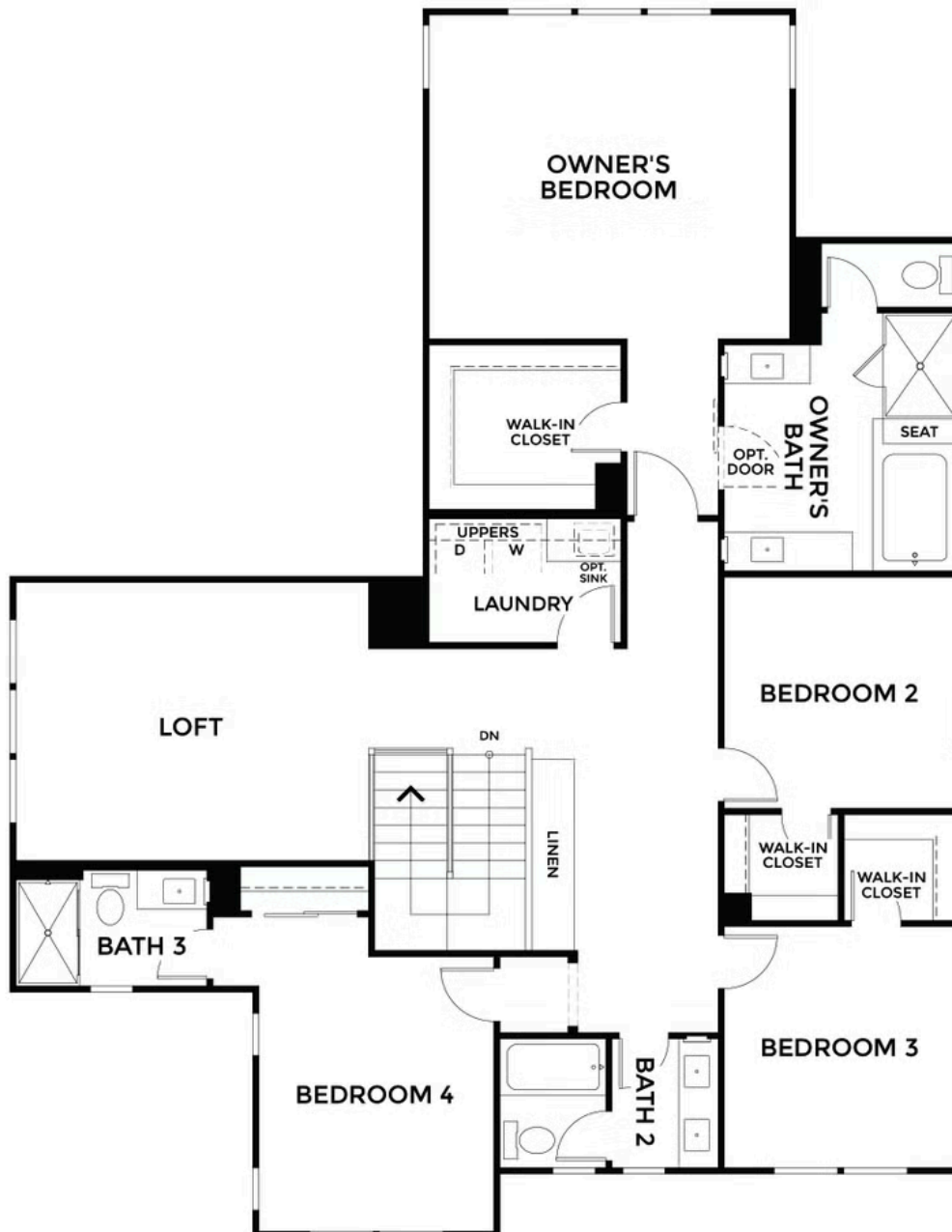
3 Car Garage



Residence 13 offers approx. 3,400 square feet of expansive living with 5 bedrooms, 4.5 bathrooms, and refined design throughout. The entry opens to a formal living and dining room, leading into a spacious gathering area where the kitchen, dining nook, and great room come together in one bright, open space. A butler's pantry off the kitchen provides added storage and prep space for entertaining or everyday use.

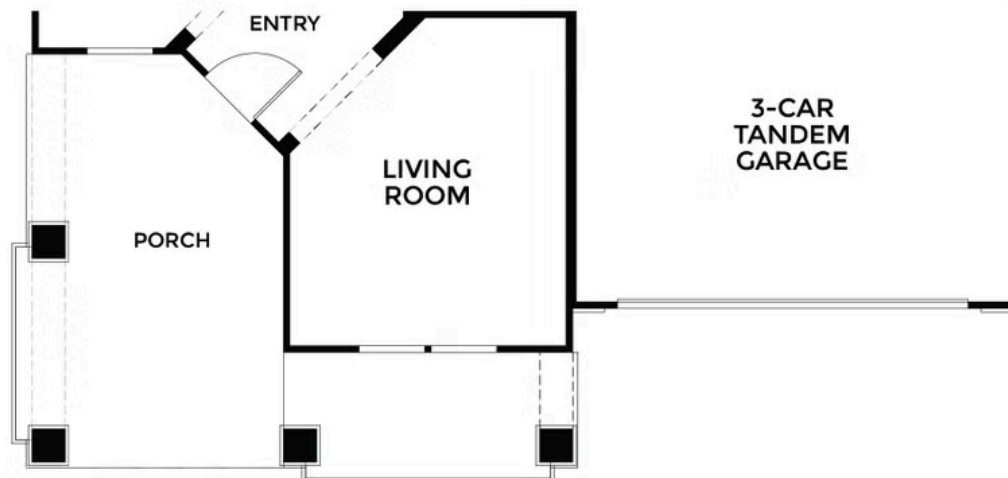
A private downstairs suite includes its own walk-in closet and full bath, making it ideal for guest or extended family. Upstairs, a flexible loft provides room for a media space, study area, or second living room. The luxurious owner's suite features a spacious bath and a large walk-in closet. Complete with a three-car tandem garage, optional covered patio, and a choice of three exterior styles, Residence 13 blends spaciousness with everyday ease.







**ELEVATION  
PRAIRIE  
SECOND FLOOR**



**ELEVATION  
PRAIRIE  
FIRST FLOOR**



**ELEVATION SPANISH  
SECOND FLOOR**



**ELEVATION SPANISH  
FIRST FLOOR**



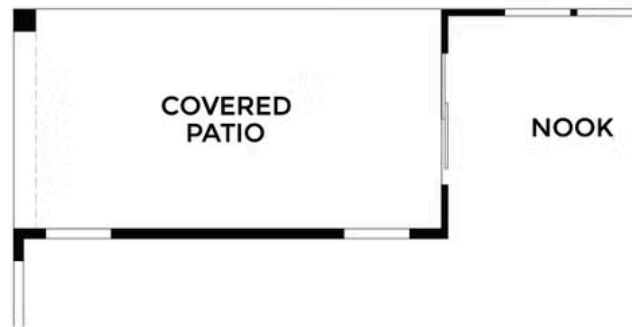
665 Grizzly St.

Oakley, CA 94561

Rancher's Gate

Dayna Floyd | 925-255-1808

[dfloyd@denovahomes.com](mailto:dfloyd@denovahomes.com)



OPTIONAL  
COVERED PATIO

