



STARTING AT
\$809,500

3,084 Sq. Ft.

2 Story

4 Bed

3.5 Bath

2 Car Garage

Residence 16 offers a sophisticated two-story design that blends open-concept living with distinctive formal spaces. The home features four bedrooms, three-and-a-half bathrooms, and a variety of flexible living areas including a loft, office, and formal dining room - making it easy to adapt to your lifestyle. At the heart of the home, the kitchen opens to the great room and casual dining area, creating a bright, connected space ideal for hosting friends or spending quality time with family.

Upstairs, you will find a luxurious owner's suite boasting a spa-inspired bathroom with a soaking tub, shower, and a spacious walk-in closet. A large laundry room with upper cabinets keeps things organized, while the covered front porch adds classic curb appeal. Options include converting the loft to a fifth bedroom with an additional bath, adding a covered patio for year



Residence 16A | Spanish

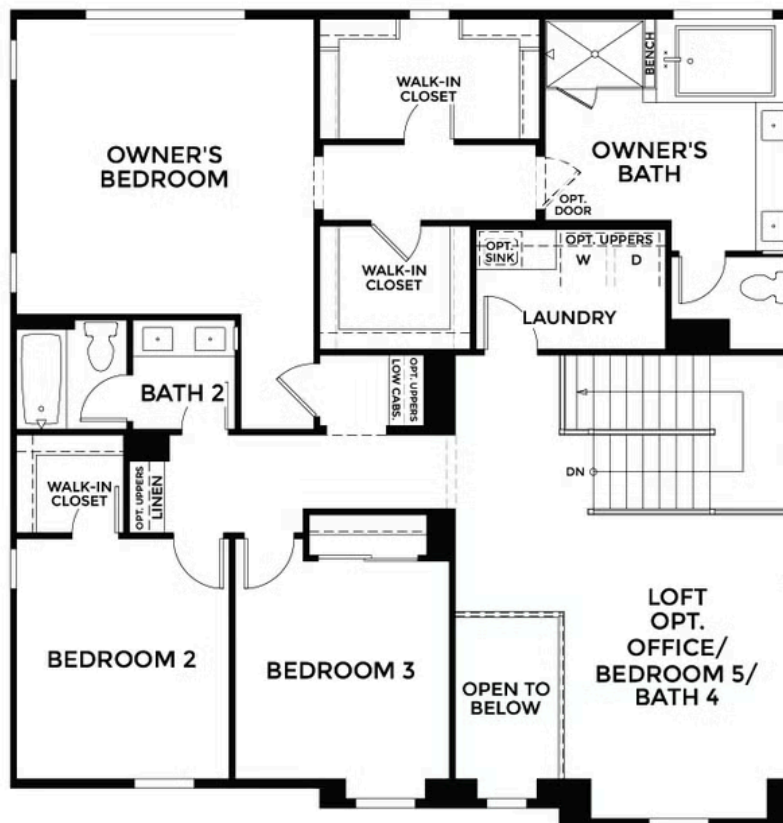


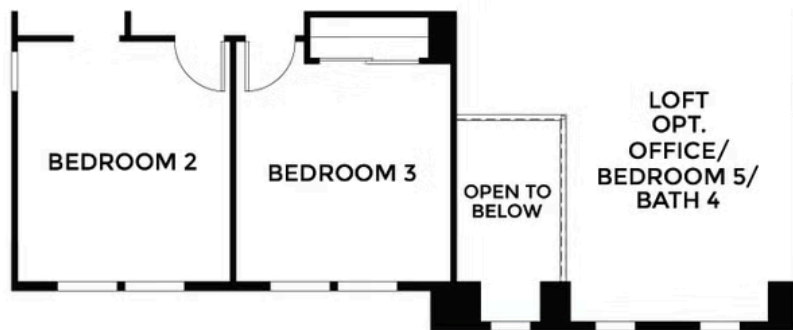
Residence 16C | Prairie



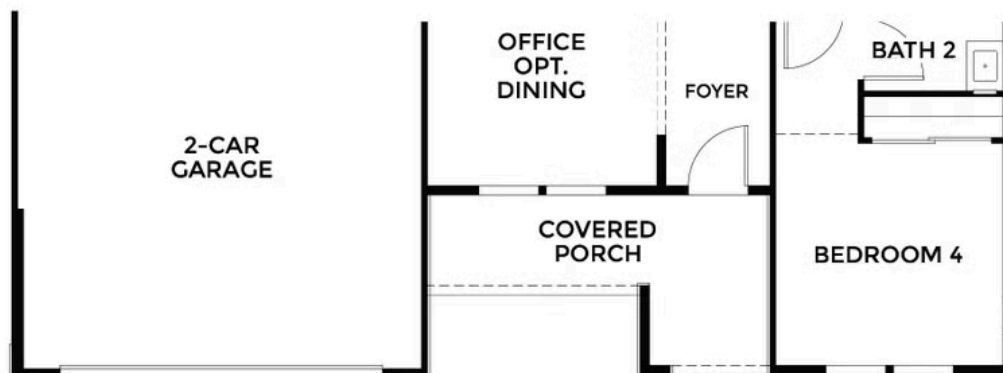
Spanish 16D | Traditional



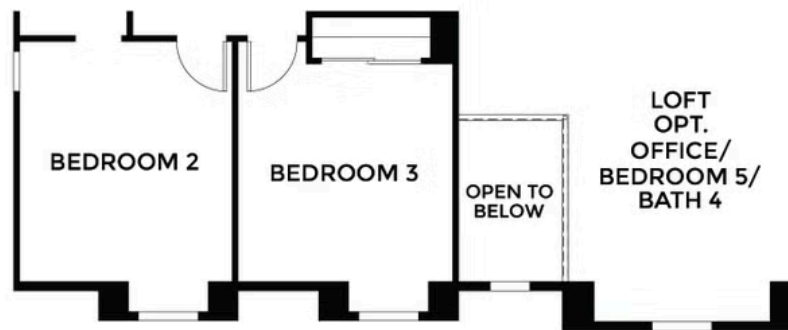




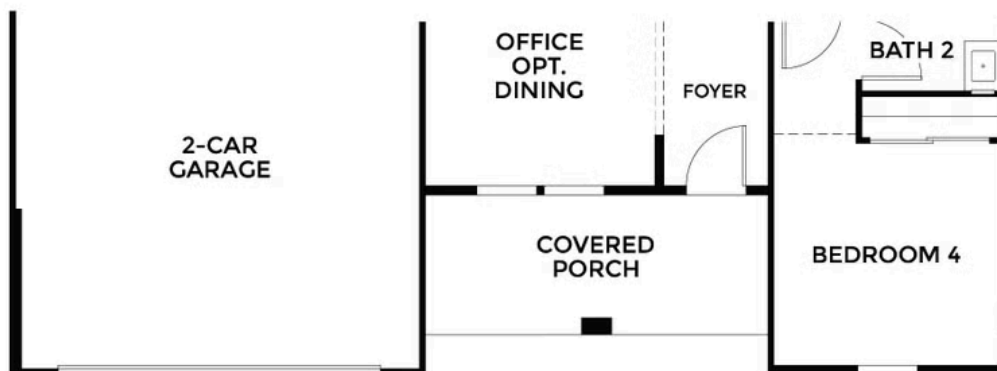
**ELEVATION PRAIRIE
SECOND FLOOR**



**ELEVATION PRAIRIE
FIRST FLOOR**



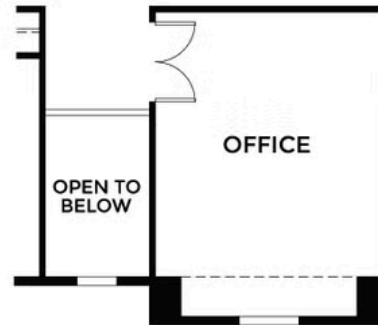
**ELEVATION SPANISH
SECOND FLOOR**



**ELEVATION SPANISH
FIRST FLOOR**



**OPTIONAL
BEDROOM 5 & BATH 4**



**OPTIONAL
OFFICE**



**OPTIONAL
DINING**



**OPTIONAL
OUTDOOR LIVING**