

UNDER
CONSTRUCTION

\$729,900

THE RESIDENCE 8

Prairie

2,277 Sq. Ft.

1 Story

4 Bed

3 Bath

2 Car Garage

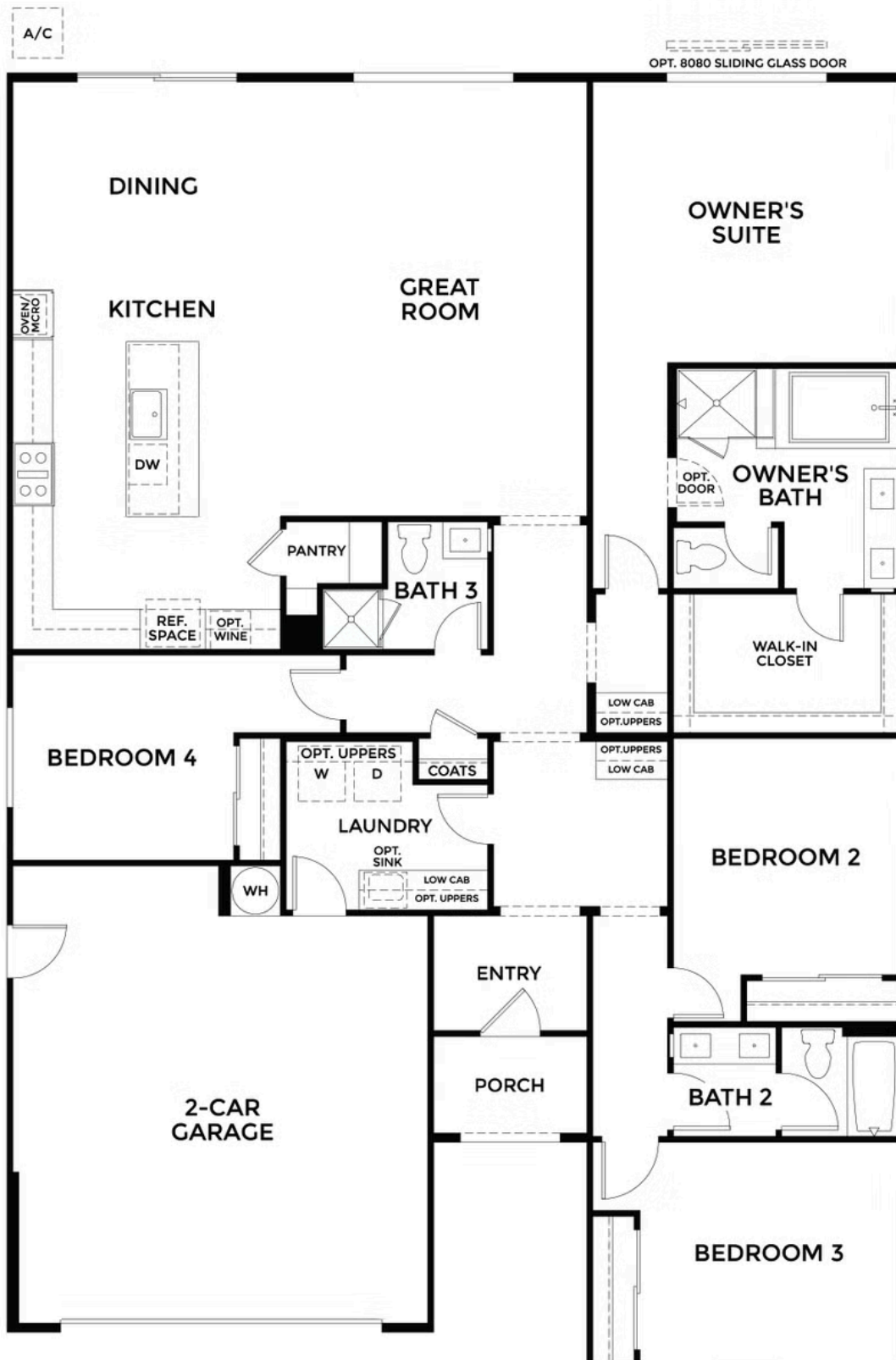


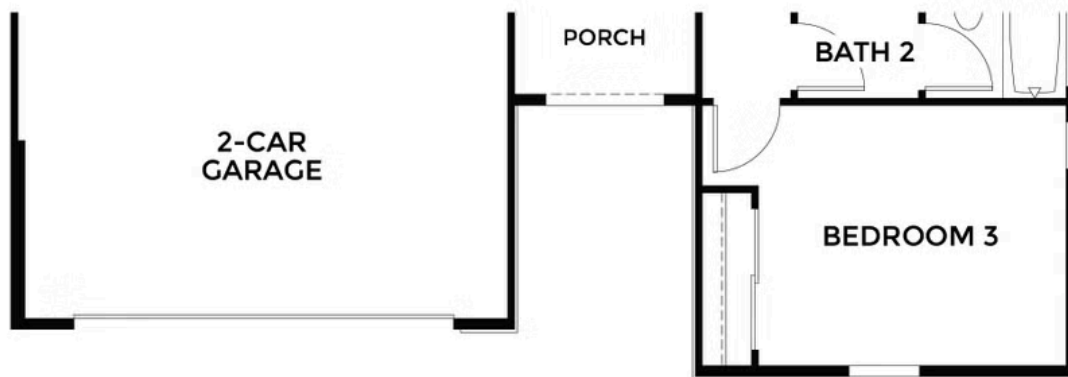
Saddle Creek Residence 8 invites you into a beautifully crafted single-story layout that boasts 2,277 square feet of adaptable living space. This home offers 4 bedrooms and 3 full bathrooms, with three distinctive exterior elevations, select one that fits your personal style.

Thoughtfully designed main living areas create an inviting backdrop for both everyday living and memorable occasions. The gourmet kitchen is the home chef's dream, featuring a large island, modern appliances, expansive countertops, and ample cabinetry that make meal prep a pleasure. Its open layout connects to the spacious dining and great room, where large windows bathe the area in natural light and create a warm atmosphere for entertaining or relaxing. Whether you are hosting lively family celebrations or enjoying quiet evenings at home, this versatile space effortlessly adapts to your needs.

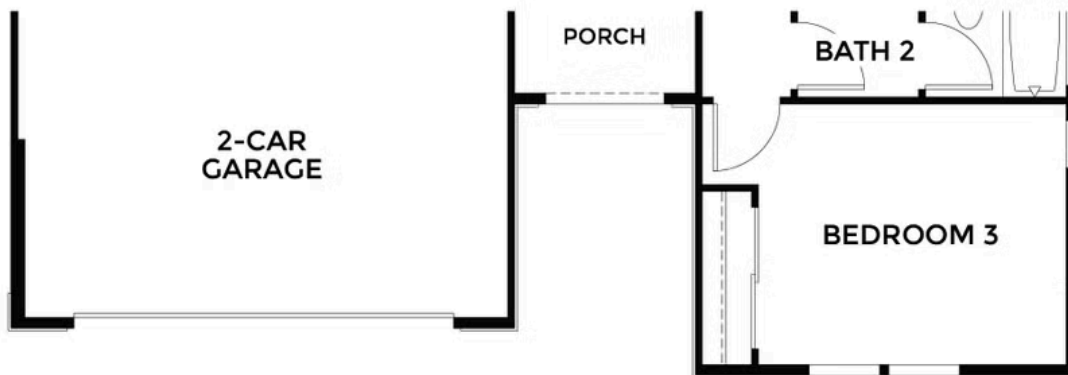
The expansive primary suite serves as a tranquil private retreat, boasting a luxurious ensuite bathroom adorned with elegant finishes and a generously sized walk-in closet that offers plenty of storage while enhancing your comfort. Complementing the primary suite are three thoughtfully designed secondary bedrooms, each offering unique charm and versatility, making this home ideal for families, guests, or even a home office. With plenty of room for everyone, this layout truly caters to a variety of lifestyle needs. Residence 8 captures both comfort and character within the vibrant master-planned community of Summer Lake North.

Please consult with sales agent for complete details.





**ELEVATION FARMHOUSE
FIRST FLOOR**



**ELEVATION PRAIRIE
FIRST FLOOR**