



STARTING AT
\$788,900

2,952 Sq. Ft.

2 Story

4 Bed

3.5 Bath

2 Car Garage

Saddle Creek Residence 10 offers 4 bedrooms, a loft or optional fifth bedroom, an office, 3 full bathrooms, and a convenient powder room, with the option for an inviting covered patio. This spacious and adaptable home spans 2,952 square feet, thoughtfully designed to accommodate families of all sizes, including those seeking multigenerational living solutions. Its flexible layout ensures every resident has their own space to thrive and enjoy their unique lifestyle.

The first floor boasts a gourmet kitchen with an island, seamlessly connected to a dedicated dining area and a bright, inviting Great Room, creating the perfect hub for family gatherings and celebrations. Additionally, a full bedroom with an ensuite bathroom on the main level makes an ideal guest suite or space for extended family members. Adjacent to both the dining



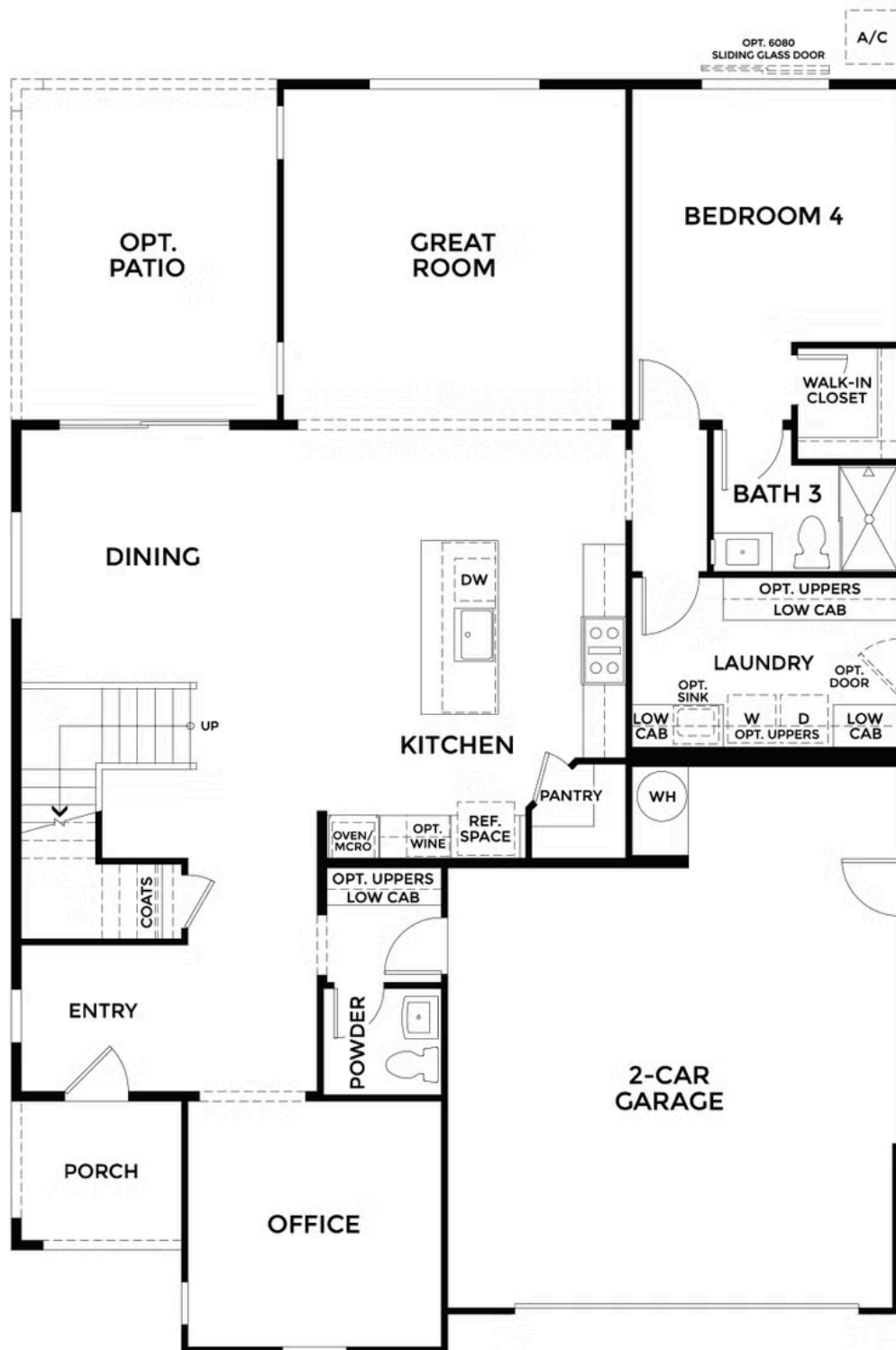
Residence 10A | Spanish



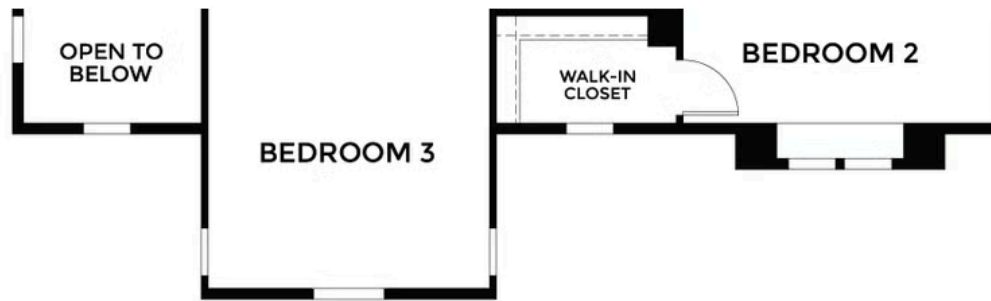
Residence 10C | Prairie



Residence 10E | Farmhouse







ELEVATION PRAIRIE
SECOND FLOOR



ELEVATION PRAIRIE
FIRST FLOOR
(SAME AS SPANISH)



**ELEVATION FARMHOUSE
SECOND FLOOR
(SAME AS SPANISH)**



**ELEVATION FARMHOUSE
FIRST FLOOR**



OPTIONAL PATIO



OPTIONAL BEDROOM 5
ILO LOFT