



STARTING AT
\$767,500

1,820 Sq. Ft.

3 Story

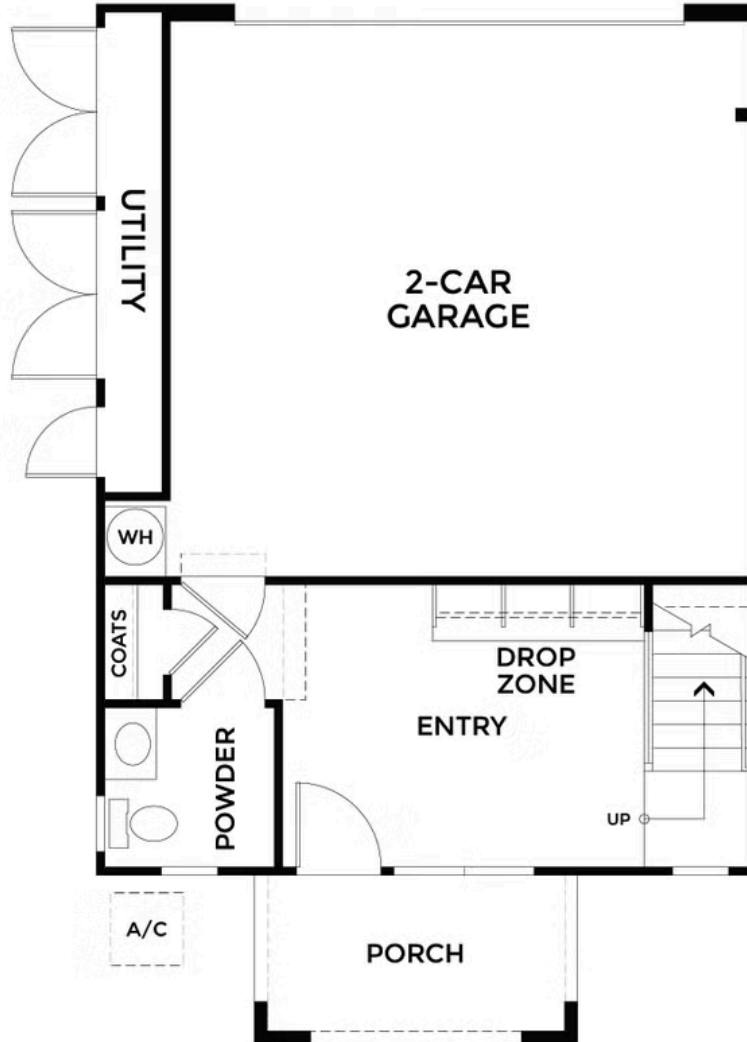
3 Bed

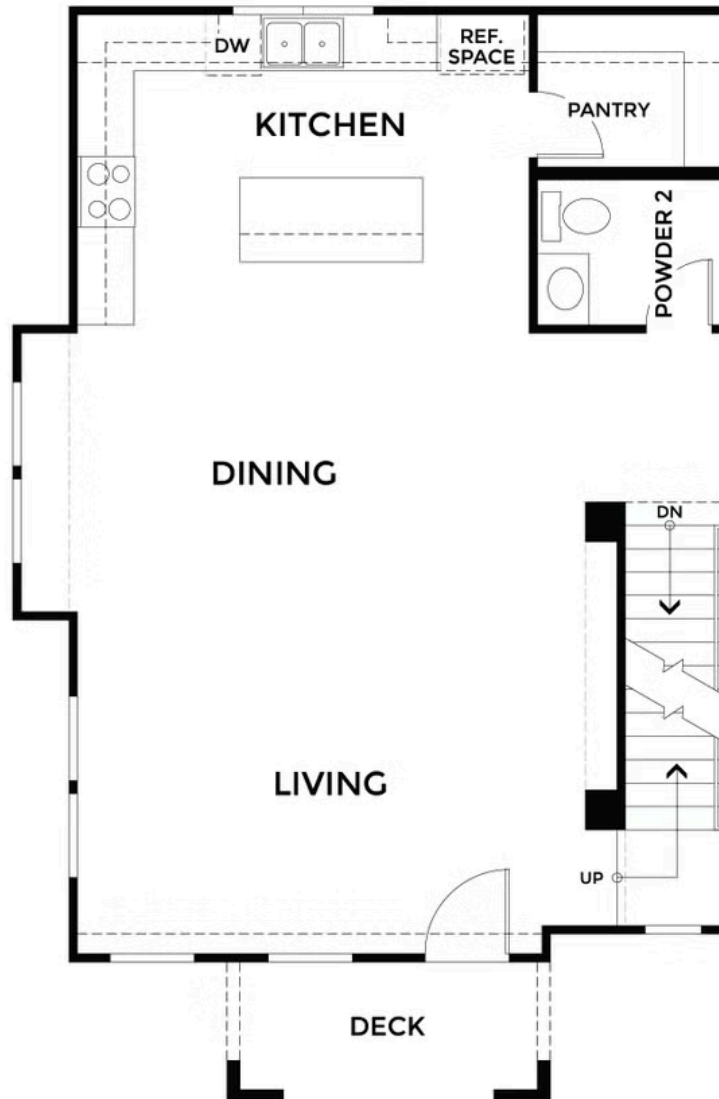
3 Bath

2 Car Garage

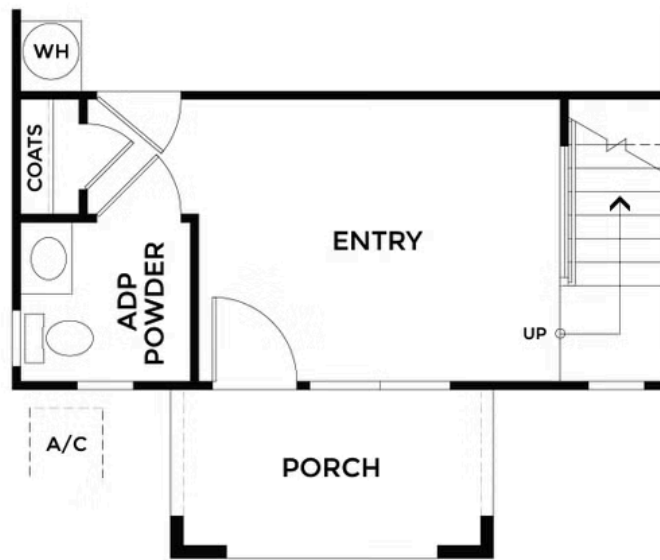
Residence 6 represents the pinnacle of the Row Townhome collection. This home is a bold three-story design spanning approximately 1,820 square feet, with three bedrooms, two full baths, and two powder baths. A welcoming front porch entrance leads into a spacious drop zone, setting the tone for the refined living spaces beyond. Crafted for those who love to entertain and embrace spacious living, the open main level features a well-appointed kitchen and expansive great room that flows effortlessly to a private porch or deck. Two powder baths ensure seamless hospitality for guests throughout.

The owner's suite sets a new standard for luxury, boasting a spa-inspired bathroom and a sense of elegance that carries throughout the entire home. Additional bedrooms offer ample flexibility for family, guests, or a dedicated home studio. A two-









ADP POWDER