

UNDER  
CONSTRUCTION

**\$370,500**

**THE RESIDENCE 7  
(DUET)**

Craftsman Bungalow

1,606 Sq. Ft.

2 Story

2 Bed

2.5 Bath

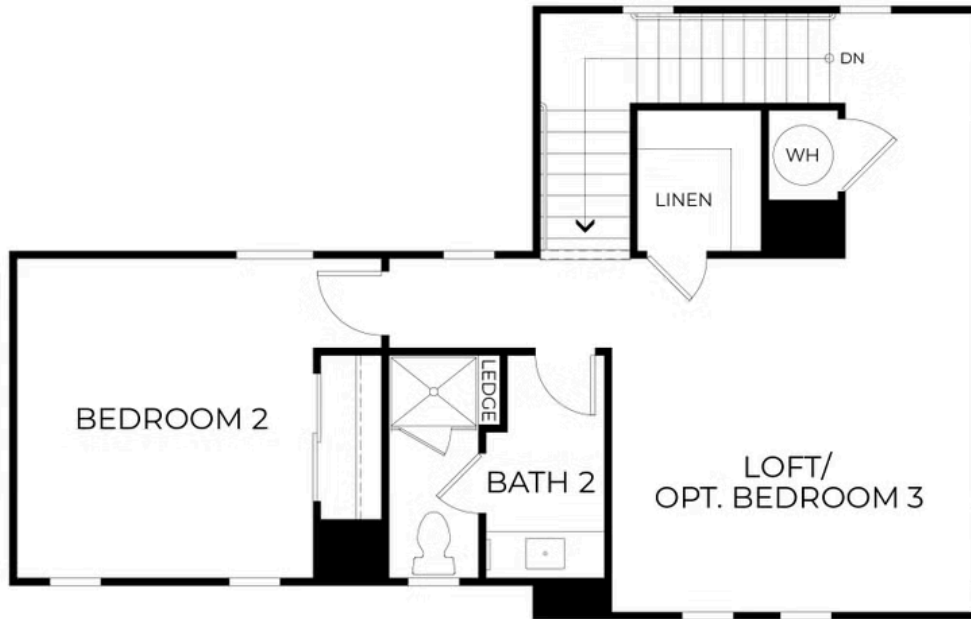
2 Car Garage

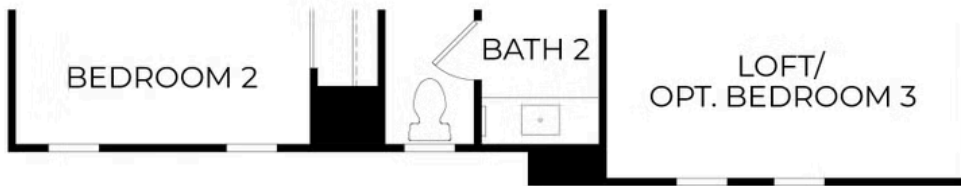


This inviting two-story home offers approximately 1,606 sq. ft. of functional living space, featuring 2-3 bedrooms, 2.5 bathrooms, and a 2-car garage. The open kitchen flows into the gathering room, creating a central hub for dining and entertaining. The first-floor owner's suite provides privacy and includes a spacious walk-in closet. Upstairs, a loft and a secondary bedroom offer additional living space, with the option to convert the loft into a third bedroom. A cozy covered porch adds an outdoor retreat to enjoy.

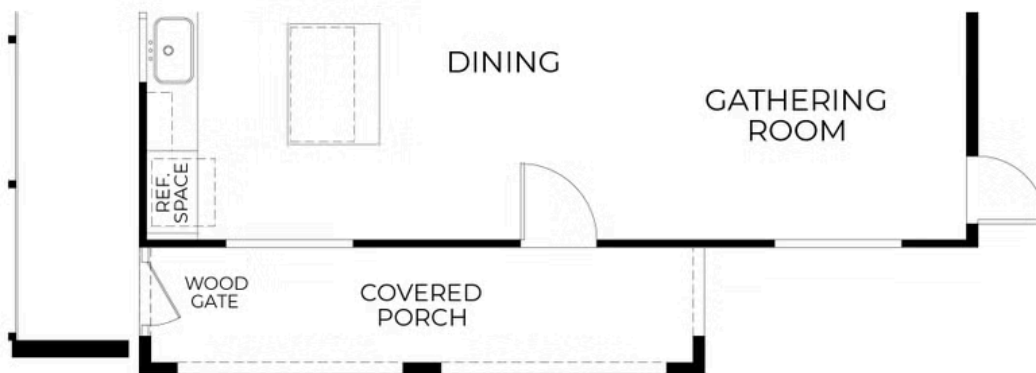
Please see agent for more details.



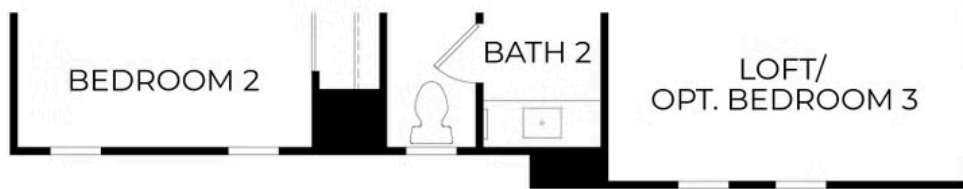




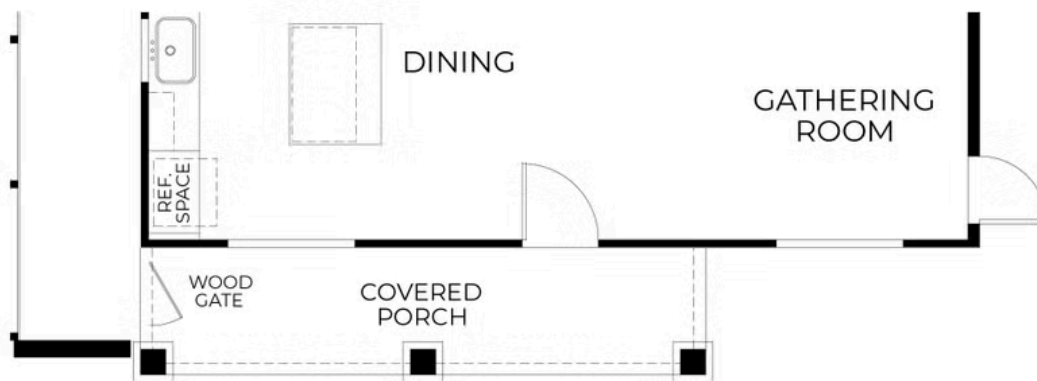
ELEVATION B  
SECOND FLOOR  
(SAME AS ELEVATION A)



ELEVATION B  
FIRST FLOOR



ELEVATION C  
SECOND FLOOR  
(SAME AS ELEVATION A)



ELEVATION C  
FIRST FLOOR



OPTIONAL  
BEDROOM 3 ILO LOFT