

UNDER
CONSTRUCTION

\$749,900

**THE RESIDENCE 2
(DUET)**

Farmhouse

1,588 Sq. Ft.

2 Story

3 Bed

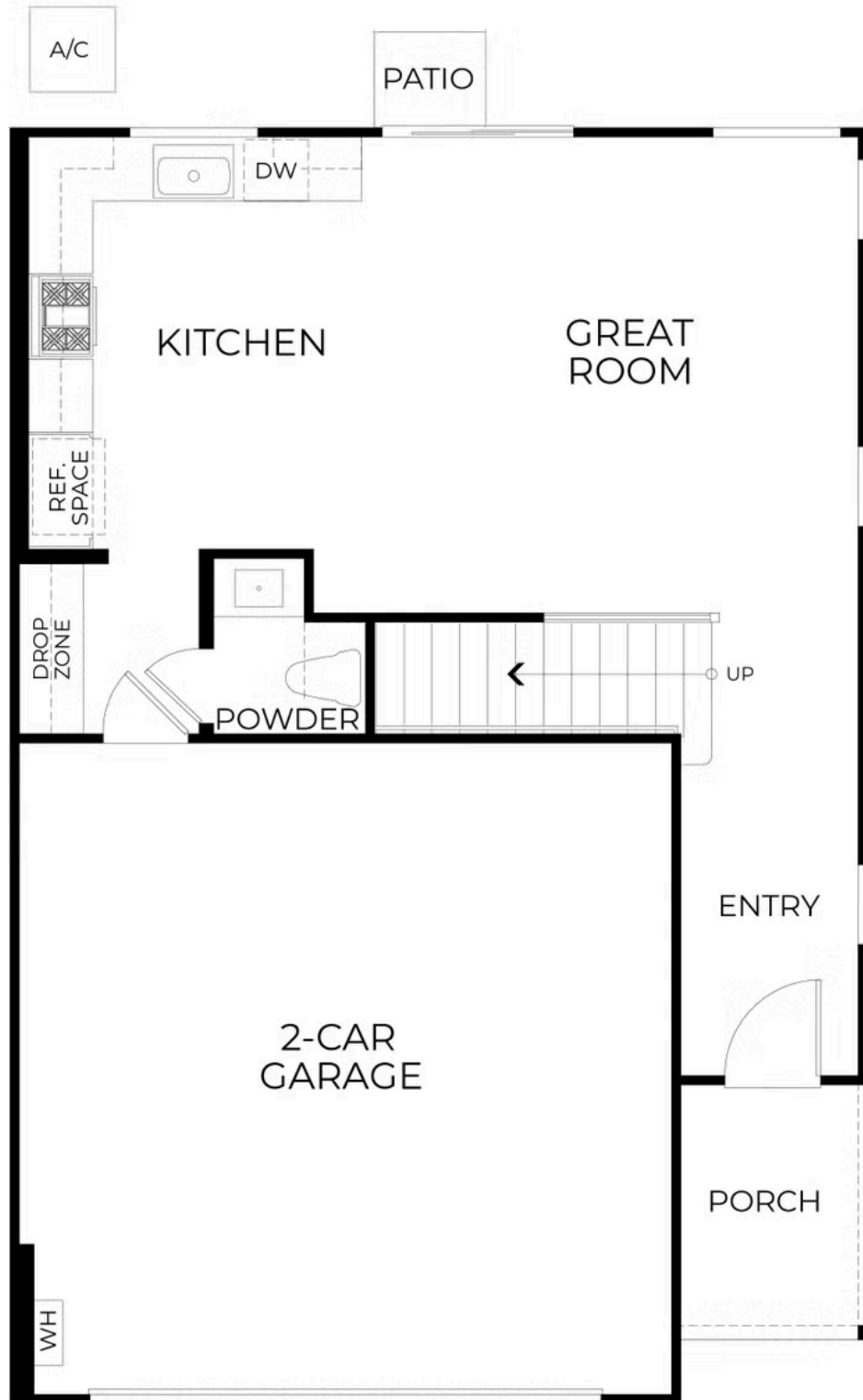
2.5 Bath

2 Car Garage



Elegance meets functionality in the Residence 2 duet floorplan perfect for those who value smart design and modern finishes. This 1,588 sq. ft. home offers 3 bedrooms and 2.5 bathrooms, with a spacious great room that seamlessly connects the living, dining, and kitchen areas, ideal for entertaining or everyday living. The kitchen features designer white shaker cabinets complemented by satin nickel hardware and fixtures, adding a clean, stylish touch throughout. The primary suite serves as a serene retreat with an en-suite bath and a generous walk-in closet. Two additional bedrooms share a full bathroom, offering plenty of space for family or guests. An attached two-car garage provides added convenience and storage. Best of all, there's still time for you to personalize this home by selecting your countertops and flooring. Residence 2 blends modern aesthetics with practical living, making it a perfect fit for today's lifestyle.

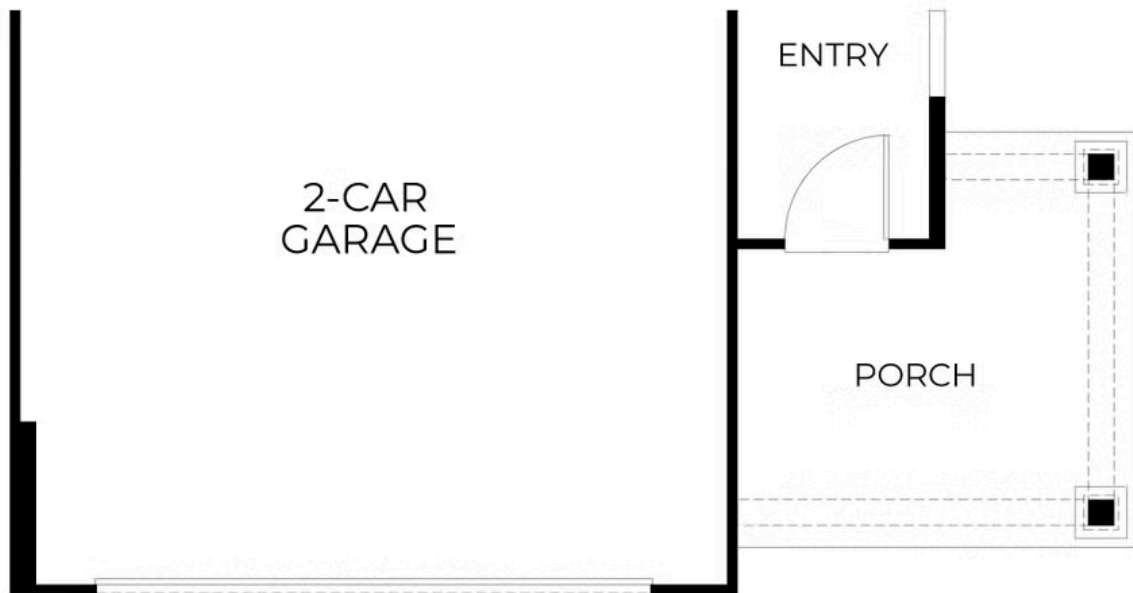
Please see the Agent for complete details. Open for tour by Appointment Only.







SECOND FLOOR



FIRST FLOOR