



UNDER
CONSTRUCTION

\$1,094,900

THE RESIDENCE 4

Craftsman

1,861 Sq. Ft.

2 Story

3 Bed

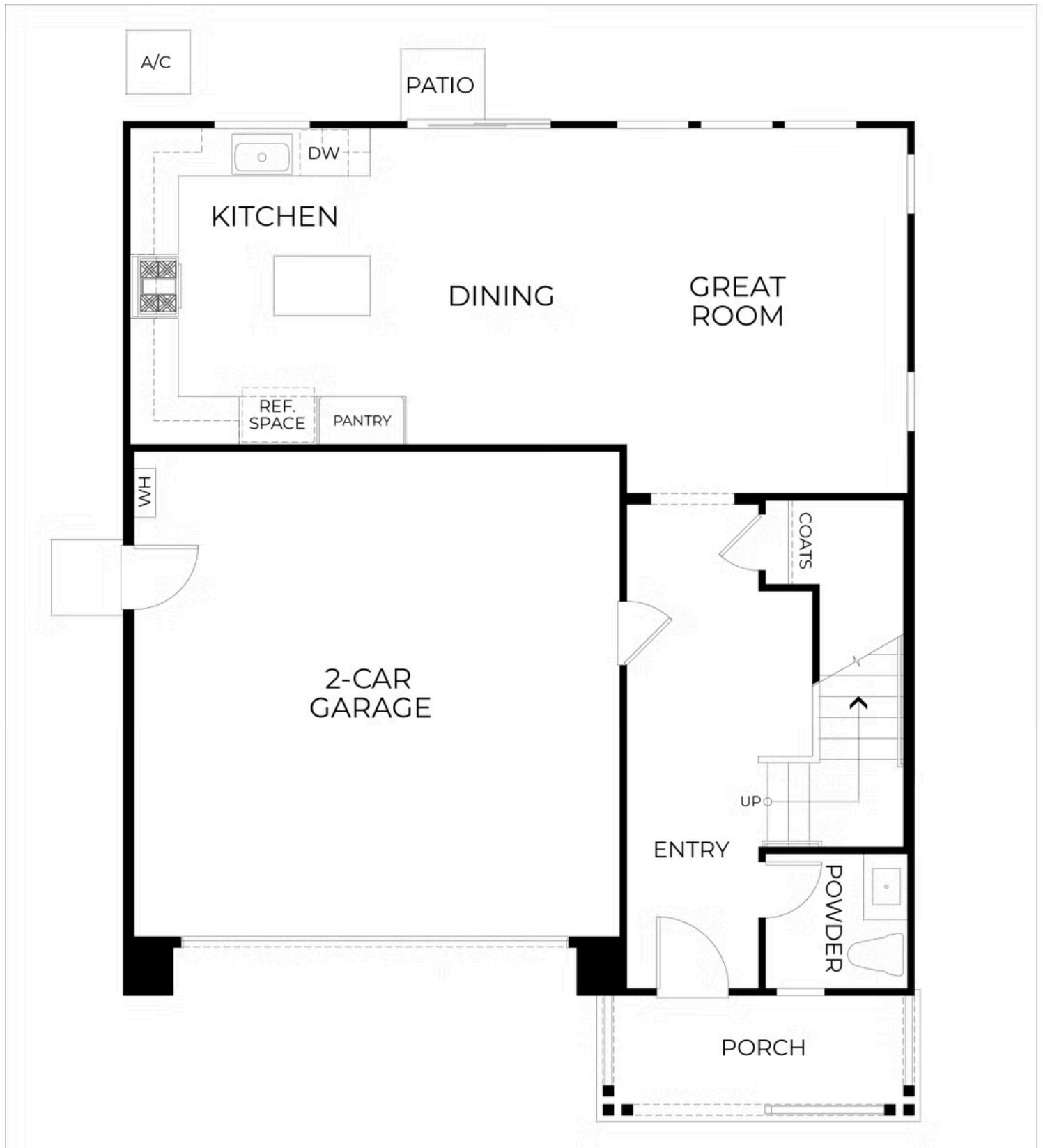
2.5 Bath

2 Car Garage

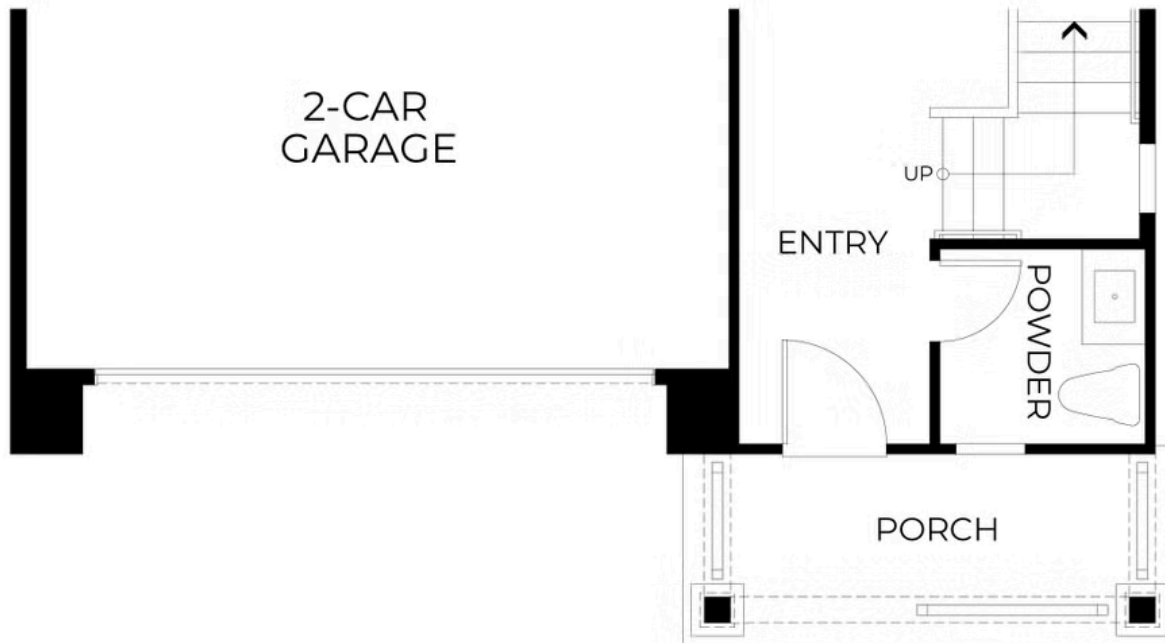
New Constuction Home near Sonoma Plaza!

Offering a thoughtful blend of space and style, this new home is designed to enhance your everyday living experience. There is still time to select countertops and flooring and make this home uniquely yours! The spacious single-family home features 1,861 square feet of modern living, perfectly balancing comfort and functionality. With 3 bedrooms and 2.5 baths, it boasts a seamless flow between the great room, dining area, and a well-appointed kitchen with a central island ideal for meal prep, casual dining, and entertaining. French walnut cabinets extended to the ceiling, and satin nickel hardware finishes throughout the home. The great room is further enhanced by recessed lighting, adding warmth and ambiance to the space. Upstairs, the versatile loft provides an ideal area for a home office, playroom, or cozy lounge. The primary suite serves as a private retreat, complete with an en-suite bathroom and a generous walk-in closet. Two additional bedrooms share a stylish full bath, ensuring comfort and privacy for family or guests. With an attached two-car garage and abundant storage throughout, Residence 4 seamlessly blends modern design, space, and practicality to suit today's dynamic lifestyles. Photos are of model home.

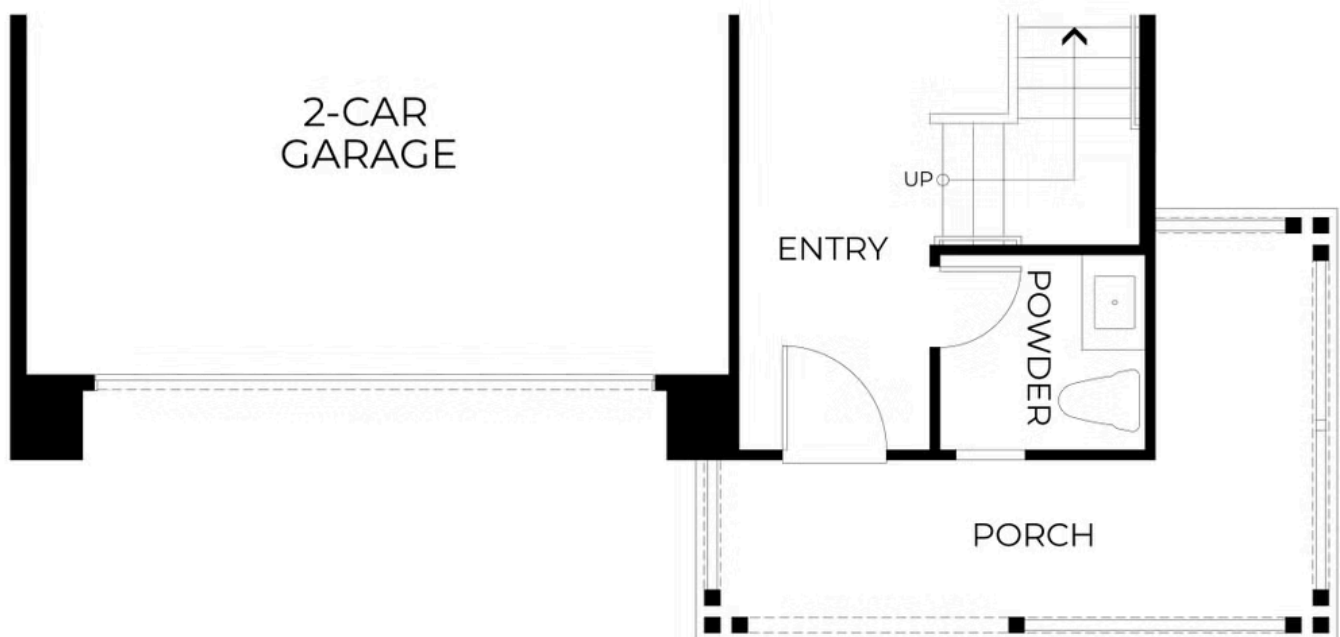
Please see the Agent for complete details.







ELEVATION B
FIRST FLOOR



ELEVATION A
FIRST FLOOR
WRAP PORCH